



THE WOMEN'S SPORTS FOUNDATION® GENDER EQUITY REPORT CARD

A SURVEY OF ATHLETIC OPPORTUNITY
IN AMERICAN HIGHER EDUCATION



Then



and Now



Published by the
Women's Sports Foundation®
with a grant from the Three Guineas Fund

© Copyright 1997 by The Women's Sports Foundation

Table of Contents

Forewords by Billie Jean King and Gloria Steinem	4
Executive Summary	5-6
Introduction	7
Data Analysis	7-8
Findings	9-16
Women's Athletics and the Elimination of Men's Sports Programs	
Athletic Participation	
Scholarship Allocations	
Recruitment Spending	
Operating Expenditures	
Coaching Resources	
Conclusions	17-18
End Notes	18
Appendix A: Report Cards	19-36
Appendix B: Resource List	37

About the Women's Sports Foundation

The Women's Sports Foundation is a national, non-profit, educational, member-based organization dedicated to promoting the lifelong participation of all girls and women in sports and fitness. Established in 1974 by Billie Jean King, its founder; Donna de Varona, a founding member and its first president; and many other champion athletes, the Foundation seeks to create an educated public that encourages females' participation and supports gender equality in sports. The Foundation serves as a center for collecting and sharing information on girls and women in sports. The Women's Sports Foundation also encourages and produces quality academic research on the psychological, social and physiological effects of sport and fitness participation in the lives of girls and women.

Authorship and Acknowledgments

This report was authored by the project director, Don Sabo, Ph.D., a professor of sociology at D'Youville College. The research was funded by leading gifts from the Three Guineas Fund and the Stephen and Tabitha King Foundation. Additional support was provided by Richard Ader, James and Luanne Barrett, Anita L. DeFrantz, Catherine Muther and Martina Navratilova. The dedication of Donna Lopiano, Ph.D., Marj Snyder, Ph.D., and Deana Monahan was critical in bringing this project through to publication. Special thanks to data analyst Margaret Yacobucci. With appreciation to Jeannette Lesinski, Pocohantas Potts, Julie Sommer and the Women's Sports Foundation interns. We are indebted to the members of the Expert Advisory Panel who helped to interpret and present the findings in a non-biased manner; i.e., Christine Grant, Ph.D., Richard Lapchick, Ph.D., and Sandy Vivas.

Cover photos were provided by Mount Holyoke College.

Forewords

When Title IX of the Education Amendments of 1972 was adopted by Congress, all of us who had ever experienced the excitement, joy and benefits of sports, were elated with the prospect that girls following in our footsteps would have the chance to feel the same way. We knew it would take time for school systems to comply with the law. We fully supported the 1975 to 1978 three-year “grace period” for schools and colleges to expand their athletic programs to give female athletes the same opportunities as their male counterparts. But we never envisioned a future where it would take 25 years to move halfway to the goal of equal opportunity...a quarter of a century!

In 1996, male athletes were still receiving almost twice as many opportunities to play in school and college athletic programs and over \$184,000,000 more in college athletic scholarships each year than their female counterparts. Plain and simple, this is not right and is in violation of federal law.

The Office of Civil Rights has been incredibly ineffective in executing its responsibility to make sure that federally funded educational institutions are complying with the conditions of such funding, one of which is non-discrimination on the basis of gender. Moms and dads are being forced to go to court and suffer the expense and animosity generated by such judicial solutions. While they have won their cases, it is clear that the promises of Title IX will not be realized in my lifetime if each school not in compliance must be taken to court to force them to “do the right thing.”

How can we have a sports future for our children that includes respect for each other’s abilities and the same chance to pursue their dreams when one of our most respected cultural institutions, education, is permitted to treat our daughters as second class citizens? Surely, we have progressed farther than this?

This “report card” is necessary. These grades are not about Title IX or the minimum requirements of law. We are grading ourselves on how we are treating our children. Unfortunately, my parents wouldn’t give me a dime for the grades you will see for this quarter of a century. It’s time to do better. It’s time to treat our daughters as well as our sons.

— Billie Jean King

I come from a generation of women who didn’t do sports. Being a cheerleader or a drum majorette was as far as our imaginations or role models could take us. We grew up believing – as many girls still do – that the most important thing about a female body is not what it does but how it looks.

Whether achieved through law and social policy, as in this and other industrialized countries, or by way of tribal practice and religious prohibitions, as in older cultures, an individual woman’s body has been far more subject to other people’s rules than has that of her male counterpart. Women always seemed to be owned as the means of reproduction. And as possessions, women’s bodies became symbols of men’s status, with value determined by what was rare. Thus, rich cultures valued thin women, and poor cultures valued fat women. Yet, in order to prevent rebellion and maintain control, all patriarchal cultures tended to value weakness in women.

This interest in the politics of strength came not from my experience, but from observing the mysterious changes in many women around me. Several of my unathletic friends had deserted me by joining gyms, becoming joggers, or discovering the pleasure of learning to yell and kick in self-defense class. Others who had young daughters had described the unexpected thrill of seeing them learn to throw a ball or run with a freedom that hadn’t been part of girls’ lives in conscious memory. I think that giving our daughters the chance to experience freedom and strength and explore an alternative to the usual fat-versus-thin dichotomy has mainly been the outcome of gender equity in sports.

At its deepest, anthropological core, Title IX and the issue of gender equity in sports is about female strength and independence. Society’s acceptance of strong, healthy, muscular women – usually most visible in women playing sports – may be one of the most intimate, visceral measures of change. An increase in our physical strength could have more impact on the everyday lives of most women than the occasional role model in the boardroom or in the White House.

Yet, as this “report card” shows, too many colleges and universities value weakness rather than strength in women. Nothing could be more important to change¹.

— Gloria Steinem

Executive Summary

Are women receiving a fair share of the opportunities in intercollegiate athletics? The 25 year-old debate and discussion on this question has been heavy with controversy and light on facts. Indeed, the facts were unavailable to the public until the publication of the NCAA's first Gender Equity Report in 1992. A limitation of this report, however, was that it presented aggregate data, which did not allow the public to view the performance of individual institutions. This lack of information made levelheaded discussion and analysis of gender equity difficult, and it also stymied efforts to hold individual schools accountable to the law. With the passage of The Equity in Athletics Disclosure Act of 1994 (EADA), schools became obliged to divulge participation rates between women and men, coaching salaries and expenses, student aid and operating expenses. On an annual basis, beginning in October of 1996, these data became available by name of individual institution.

The main purpose of this survey was to generate information about the state of gender equity in intercollegiate athletics during the 1995-96 year and to publish this information on an institution by institution basis. An eight-page questionnaire was mailed in February of 1997 to 902 presidents of colleges and universities affiliated with the NCAA. The overall response rate was 85% (N = 767 of 902 schools).

The "report card" format, described in detail in the Data Analysis section, was developed in order to enable readers to evaluate and compare each school's performance in relation to its NCAA Division counterparts. Five grades were calculated for each institution:

- ◆ athletic participation
- ◆ scholarship allocations
- ◆ recruitment spending
- ◆ operating expenditures
- ◆ composite grade

Our findings suggest that many colleges and universities are allocating resources and opportunities at a roughly 2-1 ratio between male athletes and female athletes despite the fact that women outnumber men on most campuses. While women can no longer be considered token student-athletes on American campuses, they are far from being full partners in the opportunity system of intercollegiate sport. Furthermore, it is simply not true that increases for women's athletics have come at the expense of men's sports programs.

1. Women Athletes Are Not Responsible for the Elimination of Men's Sports: The facts do not support the claim that the increasing opportunities for women's sports in the last two decades have lowered the number of men's sports programs. During the period between 1978 and 1996 at institutions participating in this study, women gained a net increase of 1,658 sports programs, while men's sports programs netted an increase of 74. Only NCAA Divisions I-A and I-AA showed a net decrease in the number of men's sports programs during the 18-year period documented by this study. Divisions I-A and I-AA netted a total loss of 152 men's sports programs or, averaging over 18 years, 8.4 programs lost per year.

2. Athletic Participation: Few institutions provide participation opportunities for female athletes in proportion to the number of women in the general student body. In 1995-96, while women were 53% of all undergraduate students, they were only 37% of all NCAA athletes. Colleges and universities did a better job getting men involved with sports programs than women.

3. Scholarship Allocations: Prospective student athletes at high schools, female college athletes, and their families are being shortchanged by American higher education. The female athletes in this study received \$142,622,803 less scholarship aid than their male counterparts during the 1995-96 year.

4. Recruitment Spending: Colleges and universities are less committed to recruiting women than men to their campuses and athletic programs. Women's teams in the sample received only 26.6% (\$16,322,470) of the total \$61,413,179 recruitment dollars spent throughout all NCAA Divisions.

5. Women's Share of the Operating Expenditures: Men's teams in this study spent \$255,050,596 more on operating expenses than women. Women's teams were budgeted \$149,909,837 (27%) of the total \$554,870,271 in operating expenditures in 1995-96, while men's teams received \$404,960,433 (73%). Some discrepancies in operating expenses may be justifiable to the extent that equipment, uniforms and event-related expenses for some sports are more expensive than others.

6. Coaching Resources: Men at institutions participating in this study dominated the coaching ranks in numbers and in salaries. Men held about three-quarters of all the head and assistant coaching positions across the NCAA institutions in this study. In Division I-A, head coaches of women's teams make only \$0.63 for every dollar earned by head coaches of men's teams.

Important Notes

1. It should be noted that the "equity standard" selected by the researchers was not intended to relate to any specific requirement of federal law, such as Title IX of the Educational Amendments Act of 1972. Title IX requirements are more complex and neither a strict proportionality standard of participation nor exact dollar expenditures are required under that law. Rather, the selection of the equity standard was based on the simple notion that equitable treatment of male and female athletes is a reasonable expectation and, if males and females are not equally represented in the general student body, then it is reasonable to expect that athletic opportunities and resources would be available in proportion to their representation.

For instance, Title IX requires that scholarship dollars be distributed to male and female athletes in proportion to their participation in athletics. The grading system used for this study gives an "A" to those schools whose scholarship dollar distribution is in proportion to males and females in the student body. The rationale for this system is as follows: Should a school that has 50% women in its student body but only provides 22% of athletic opportunities to women receive an "A" if only 22% of scholarship dollars go to women? In such a scenario, the school would be rewarded with a high grade for depressing women's participation opportunities.

2. These grades are intended to reflect a "broad brush" evaluation rather than an in-depth examination of specific line item expenditures. These grades are also best viewed as "general indicators" of the respective educational institution's treatment of male and female student-athletes. It should be noted, for example, that institutions with lower percentages of female undergraduates will have a significantly easier time achieving higher grades than those with higher percentages of female undergraduates. Budget expenditures for recruiting or programming may also vary according to the idiosyncratic needs of individual programs.

3. The findings and conclusions presented here are based on an 85% response rate across all NCAA Divisions. Some schools did not provide all the information we requested or they supplied it in an unusable form. Schools also used different methods for determining full-time undergraduate enrollments, and accounting practices varied across institutions. Finally, some respondents indicated that they sent different information to us than they did to the NCAA. The appendix lists grades for all institutions that supplied information by NCAA division as well as all institutions that either reported information too late to be included in this study or did not return the survey.

Introduction

Since the passage of Title IX of the Education Amendments Act in 1972, the participation and interest of girls and women in sports has soared. Whereas 300,000 girls participated in high school sports prior to Title IX, today they number 2.37 million. Women are now 37% of college athletes and were 39% of the 1996 United States Olympic Team members. A significant part of the story of Title IX has been the increasing opportunities for girls and women in sports. Yet the story also revolves around the accountability of government officials, educators and athletic administrators to establish equitable athletic programs throughout the United States as required by federal law.

A basic premise underpinning this report is that females deserve the same athletic opportunities as males. We also believe that Americans should be able to evaluate the achievements of their educational institutions in relation to athletic programs.

The Gender Equity Report Card is intended to be a resource for parents considering appropriate colleges for their children, for alumnae interested in assessing their alma mater's treatment of student athletes, for journalists in search of information, or for administrators and policy makers monitoring gender equity in sports.

The Gender Equity Report Card presents the results from a survey of 767 colleges and universities with athletic programs that were affiliated with the National Collegiate Athletic Association (NCAA) in 1995-96.

Data Analysis

An eight-page questionnaire was mailed in February of 1992 to 902 presidents of colleges and universities affiliated with the NCAA. The overall response rate was 85% (N = 767 of 902 schools); see Table 1 for a breakdown by NCAA Division. Division III respondents include 11 all-female institutions while Division I-AA respondents include one all-male institution to which The Equity in Athletics Disclosure Act of 1994 does not apply. Many schools did not respond (contrary to the requirements of federal law) or they forwarded incomplete questionnaires. Women's Sports Foundation staff followed up with phone calls, faxed messages, and letters requesting cooperation and missing information to no avail. Questionnaire responses were coded and keyed into several spreadsheets using Microsoft Excel software.

TABLE 1 SAMPLE SUMMARY BY NCAA DIVISION TYPE*				
NCAA Division	Sample Number	Population Number	Response Rate %	Description
I-A	103	108	95	schools that sponsor major football and basketball programs
I-AA	100	119	84	schools that usually sponsor major basketball and smaller football programs
I-AAA	70	78	90	schools that sponsor major basketball programs but no football
II	215	245	88	schools that limit athletic scholarship and other expenses to provide competitive but financially less costly athletic programs
III	279	352	79	schools that do not award athletic scholarships
Total:	767	902	85	
* These descriptions fit the majority of schools sampled. An exception, for example, is that Ivy League schools do not provide scholarships, but compete in Division I sports.				

Basic descriptive statistics were generated in order to identify patterns and to make comparisons between subgroups. For specific information regarding the research design and data analysis, contact the author.

The “report card” format was developed in order to enable readers to evaluate and compare each school’s performance in relation to its NCAA Division counterparts. Letter grades were calculated and assigned according to a rank-ordering of scores that reflect the percentage of resources and opportunities allotted to women athletes in proportion to their numbers in the student body. Logically, institutions that achieved substantial proportionality received the highest grades of “A” and “A-.” Lesser grades were calculated mathematically. Single-sex institutions were excluded from these rank-ordered comparisons.

INTERPRETING THE GENDER REPORT CARD for participation and scholarship, recruitment and operating expenditures		
Rank Order	Grade	Grade Definition
Meet equity standard	A	Excellent
Within 5% of meeting equity standard	A-	Very Good
5.1-9% below the equity standard	B+	
10-14% below the equity standard	B	Good
15-19% below the equity standard	B-	
20-24% below the equity standard	C+	
25-29% below the equity standard	C	Average
30-34% below the equity standard	C-	
35-39% below the equity standard	D+	
40-44% below the equity standard	D	Less than Average
45-49% below the equity standard	D-	
50% below the equity standard	F	
Incomplete	I	Did not supply information.

The grading procedure for this study is based on the assumption that equity exists when the female and male athletes at a school are provided funds and opportunities to participate that are in proportion to their numbers in the undergraduate student body. We applied this equity standard in order to evaluate the performance of each school and NCAA Division in relation to athletic participation and spending on scholarships, recruitment, and operations.

For this study, the percentage of female athletic participants was obtained by dividing the number of participants on women’s teams by all the athletic participants on campus; i.e., male plus female plus coed team participants.

An individual grade was calculated for 1) athletic participation and spending on 2) scholarship aid, 3) recruitment, and 4) operations. The grades (including pluses and minuses) for each individual school in the sample appear in the Appendix. A description of the grading procedure appears above. A composite grade point average (GPA) based on a 4.00 scale was also calculated for each institution, and appears in the Appendix with a corresponding letter grade, calculated as follows: A=3.8 or above; A-=3.4–3.7; B+=3.1–3.3; B=2.8–3.0; B-=2.4–2.7; C+=2.1–2.3; C=1.8–2.0; C-=1.4–1.7; D+=1.1–1.3; D=0.8–1.0; D-=0.7 and below.

Findings

Women's Athletics and the Elimination of Men's Sports Programs

The claim is often made that the increased opportunities for women in college sports have triggered the demise of many men's sports programs. Simply put, the assumption is that women's gains under Title IX have necessitated major cutbacks in the numbers of men's sports programs, particularly non-revenue sports programs. While this assertion has made for persuasive rhetoric against the implementation of Title IX, until this report, arguments on all sides of the issue have been based on single cases rather than on a wider empirical foundation.

The respondents in this survey were asked to list those men's and women's sports programs on their campus that were added or eliminated between 1978-1996. Eighty-three percent (n = 637) of the schools sampled provided information about the type of sports programs that had been added or eliminated between 1978-1996; e.g., lacrosse added in 1979, diving eliminated in 1989, or field hockey added in 1992.

The data analysis unearthed several patterns. We found that, to think simply in terms of "women's sports programs being added" and "men's sports programs being eliminated," obscures the historical realities. The facts show that, throughout the 1978-96 period, some women's sports programs were added while others were dropped and, likewise, some men's sports programs were added while others were eliminated. At the State University of New York at Potsdam, for example, men's lacrosse and cross country were added in 1978 and 1983 respectively, while women's equestrian, cross country, soccer, and lacrosse were added in 1979, 1983, 1988, and 1994 respectively. Several men's sports programs were dropped including baseball (1982), tennis (1985), cross country (1990) and wrestling (1991), while several women's sports programs were also eliminated including ice hockey (1985), field hockey (1988), and cross country (1990).

Scrutiny of Tables 2 and 3 shows that, across all NCAA Divisions, many more women's sports programs were added than men's sports programs during the 1978-96 period among the schools that provided information (n = 637, 83% of the sample). While 2,239 new women's sports programs were created, 581 were eliminated. Hence, women netted a total of 1,658 additional sports programs or an average gain of 92 sports programs per year between 1978 and 1996.

Table 2			
The Net Outcome of Women's Sports Added and Eliminated during 1978-1996 by NCAA Division			
NCAA Division	The Number of Sports Added	The Number of Sports Eliminated	Net Outcome
I-A	235	81	154
I-AA	283	90	193
I-AAA	161	37	124
II	653	201	452
III	907	172	735
Total	2,239	581	1658

With regard to men, a total of 927 new sports programs were added while 853 sports programs were eliminated, producing a net gain of 74 sports programs across all NCAA Divisions between 1978 and 1996. Moreover, as Table 3 shows, net losses for men's sports programs only occurred in Divisions I-A and I-AA, where a total of 90 men's sports programs were added and 242 were dropped, producing a net loss of 152 sports programs. In the other NCAA Divisions, men registered a net gain of 226 new sports programs during the time period.

<p>Table 3 The Net Outcome of Men's Sports Added and Eliminated during 1978-1996 by NCAA Division</p>			
NCAA Division	The Number of Sports Added	The Number of Sports Eliminated	Net Outcome
I-A	22	113	-91
I-AA	68	129	-61
I-AAA	93	56	37
II	344	286	58
III	400	269	131
Total	927	853	74

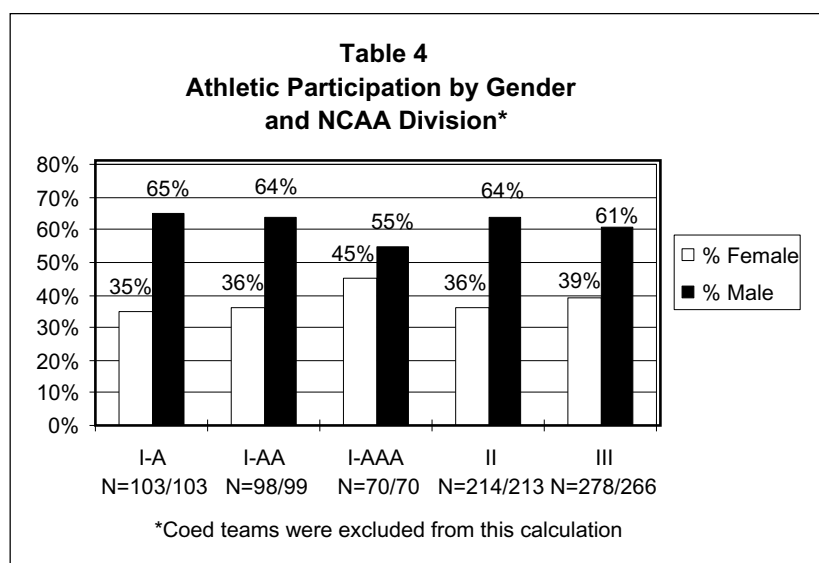
The data support the following inferences. First, women's sports programs made solid net gains between 1978 and 1996 in the schools reporting here; i.e., more women's sports programs were added than dropped. Second, women's gains were not associated with a significant reduction in the number of men's sports programs. During the 18-year period documented by this survey, women garnered an average net gain of 92 sports programs per year, while men netted an average gain of 4.1 sports programs per year. Only NCAA Divisions I-A and I-AA showed a net decrease in the number of men's sports programs during the 18-year period documented by this study. Divisions I-A and I-AA netted a total loss of 152 men's sports programs or, averaging over 18 years, 8.4 programs lost per year.

In summary, the evidence does not support the contention that the growth of women's opportunities in college athletics was accompanied by the widespread elimination of men's sports programs — especially men's non-revenue sports programs. More systematic research is needed in order to understand the rationales and motivations behind administrative decisions to add or eliminate both men's and women's programs, particularly in Divisions I-A and I-AA where men's non-revenue sports programs have experienced unique setbacks.

Athletic Participation

The results showed that, in most schools, women did not have the opportunity to participate in sports at rates that were substantially proportionate to their numbers on campus. Men's opportunities to participate in sports far exceeded their proportionate number on campus. Women were 37% (n = 90,033) of all the NCAA athletes sampled in 1995-96 (total N = 244,674). Male athletes numbered 149,724 (61%) and athletes on coed teams numbered 4,917 (2%).

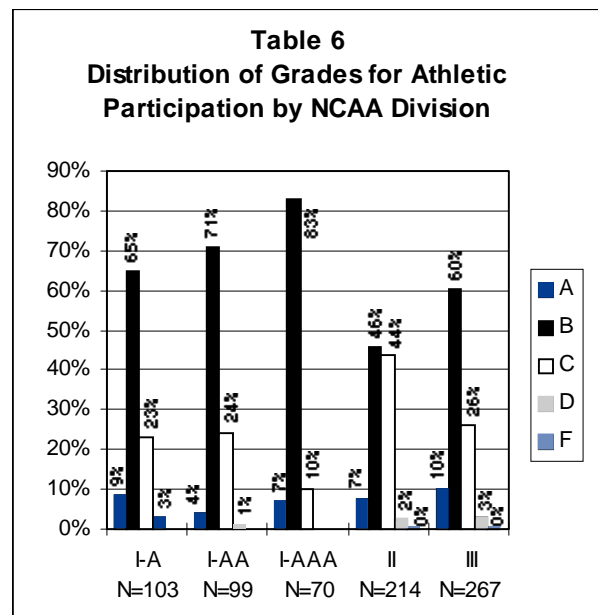
Table 4 depicts women's and men's participation rates by NCAA Division. (Coed athletes are not included in these calculations). NCAA Divisions II and III fielded the largest numbers of female athletes (17,879 and 33,121 respectively). Women logged the largest percentage of all athletes in NCAA Divisions I-AAA and III; i.e., 45% (n = 7,647) and 39% (n = 33,121) respectively.



We also evaluated the extent to which female and male students are involved with campus athletic programs. As Table 5 shows, for both women and men, NCAA Division III has the largest percentage of its students involved with sports. Colleges and universities are clearly doing a better job getting more males involved with athletic programs than females.

Table 5						
The Extent of Student Involvement with Athletic Programs by Gender and NCAA Division*						
	Females			Males		
NCAA Division	Females Enrolled	Female Athletes	%	Males Enrolled	Male Athletes	%
I-A	829,800	16,977	2.0	830,019	31,689	3.8
I-AA	371,226	14,409	3.9	329,119	25,736	7.8
I-AAA	247,541	7,647	3.1	191,936	9,477	4.9
II	453,012	17,879	3.9	367,899	31,868	8.7
III	385,748	33,121	8.6	319,574	50,954	15.9
Total	2,287,327	90,033	3.9	2,038,547	149,724	7.3
*These results are skewed because some student-athletes play more than one sport and are, in effect, counted more than once. Participation in coed sports is not reported here.						

Table 6 illustrates the distribution of “Athletic Participation” grades for each NCAA Division. Considerable variation occurred across Divisions, with Division III leading the proverbial class with 10% (n = 27) of its 267 schools that supplied information earning “A” grades (i.e., within 5% of the equity standard). Division II displayed the most mediocre results with 44% (n = 94) of the 214 schools that reported scoring in the “C” range.



Scholarship Allocations

For young athletes and their families, an athletic scholarship is often a financial passport to higher education. Scholarships also allow young athletes to take their passion and skill to the next level. Finally, the provision of scholarship opportunities is an important way that educational institutions meet the needs and interests of student athletes and those of the wider community.

The results show that in most American colleges and universities during 1995-96, male athletes were given more than a fair share of scholarship dollars. Across all NCAA divisions, male athletes received 63% (\$354,893,514) of the total \$567,164,225 of scholarship funds allocated. Female athletes received 37% (\$212,270,711) of scholarship dollars, or \$142,622,803 less than their male counterparts.

As Table 7 shows, males received a disproportionately higher percentage of scholarship money than females in all NCAA Divisions except for Division I-AAA (51% and 49% of \$77,209,413, respectively). Indeed, a surprisingly consistent ratio of slightly under 2-to-1 male-to-female scholarship dollars emerged across Divisions I-A, I-AA, and II. Table 8 shows the discrepancies in terms of total scholarship dollars.

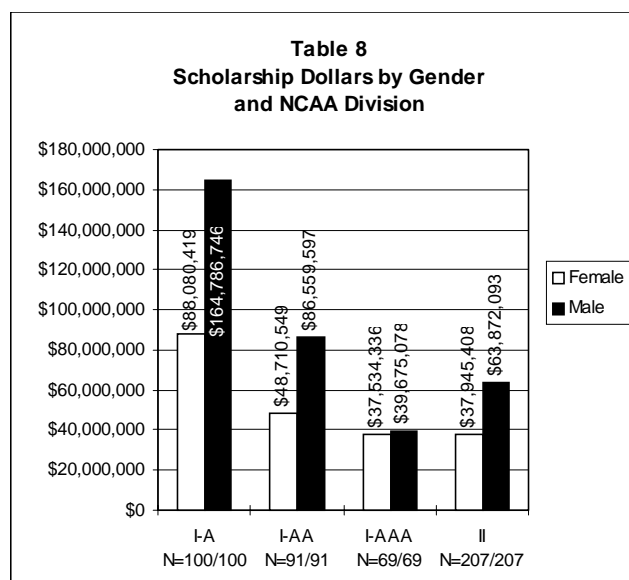
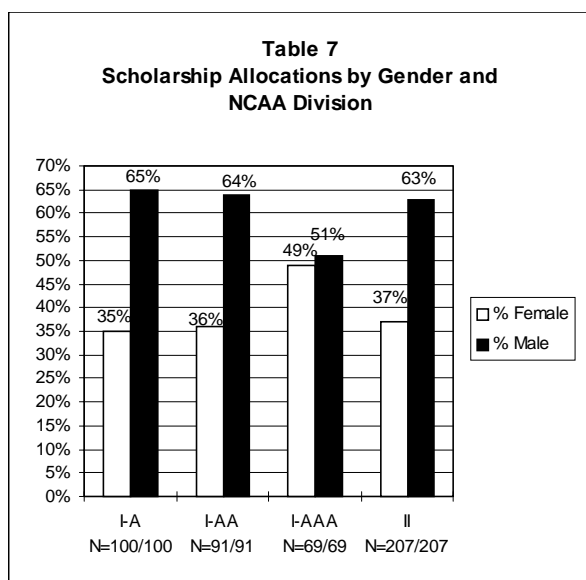
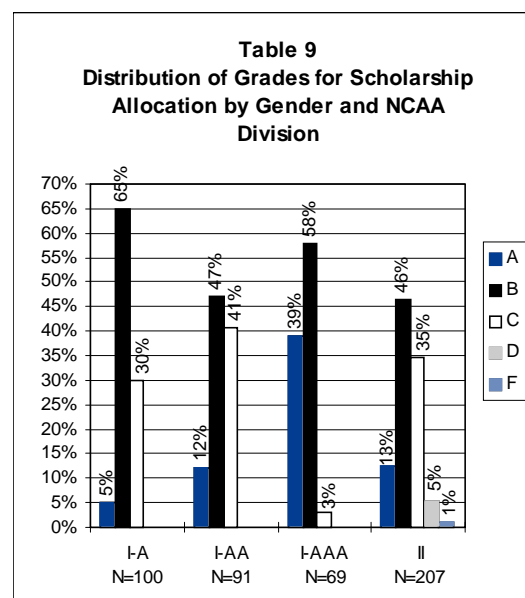


Table 9 depicts the distribution of “Scholarship Grades” in each NCAA Division. Division I-AAA scored highest with 39% (n = 27) of the 69 schools that reported falling in the “A” category. Division I-AA performed the poorest with 41% (n = 37) of the 91 schools that provided data earning a “C” grade.

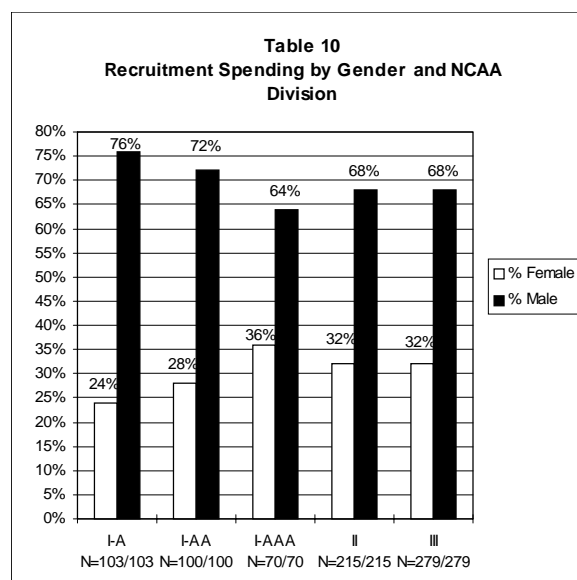


Recruitment Spending

Colleges spend money on recruitment in order to attract and bring student-athletes to their campus. The amount of recruitment dollars spent on women athletes can be viewed as a measure of institutional commitment to women’s sports programs and, more generally, to women as a social group.

The results indicate that colleges and universities were more invested in recruiting male athletes than women athletes. Across all NCAA divisions, women’s teams received 26.6% (\$16,322,470) of the total \$61,413,179 spent on recruitment. Men’s teams received 72.6% (\$44,581,740) of the total, while coed teams garnered less than 1% (\$508,970).

Table 10 presents a breakdown of recruitment spending for only men’s and women’s teams for all NCAA Divisions. Women’s teams fared best in Division I-AAA, receiving 36% (\$1,823,796) of the total recruitment funds (\$5,078,648). Women’s teams were the most shortchanged on recruitment dollars in Division I-A where they received only 24% (\$8,593,940) of the total \$36,424,377 spent on recruitment. Table 11 presents recruitment spending broken down by dollars spent on male and female athletes.



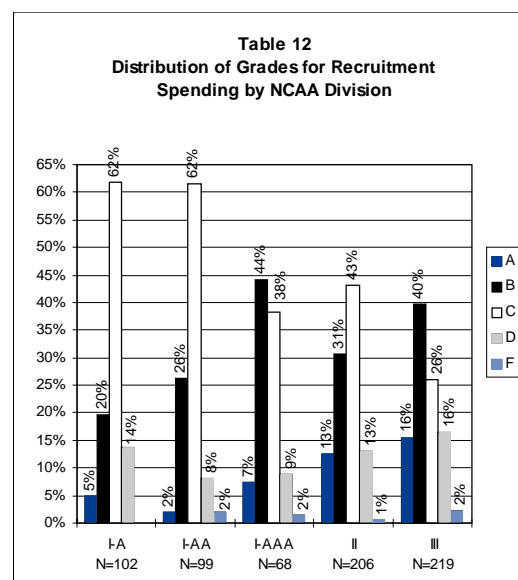
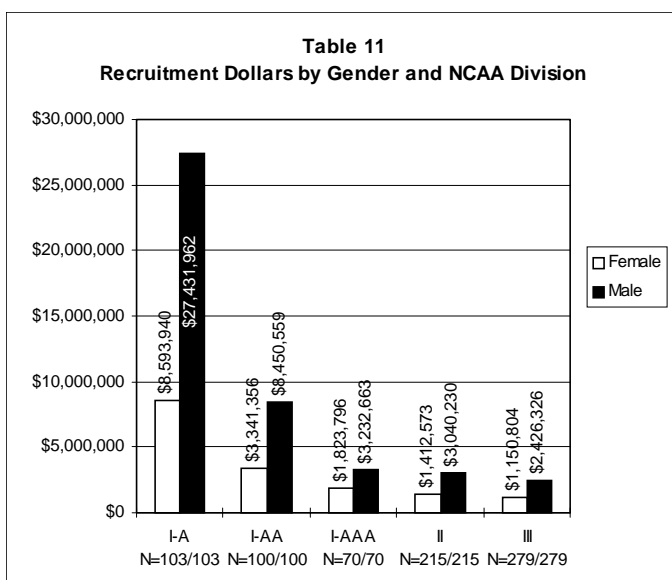


Table 12 summarizes the distribution of “Recruitment Grades” by NCAA Division. Division III generated the largest percentage of “A” grades. That is, the dispersal of recruitment dollars in 15% (n = 34) of the 206 schools that reported was substantially proportionate. Division I-A logged the worst performance with 62% (n = 63) of the 102 schools that reported scoring “C” grades or lower.

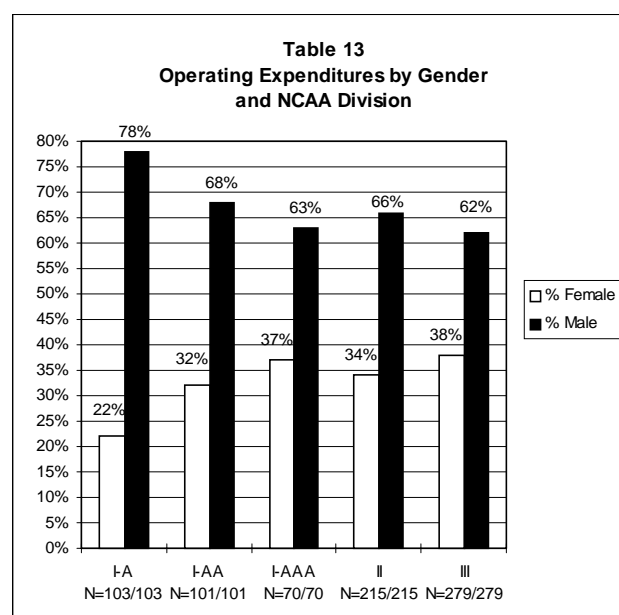
Operating Expenditures

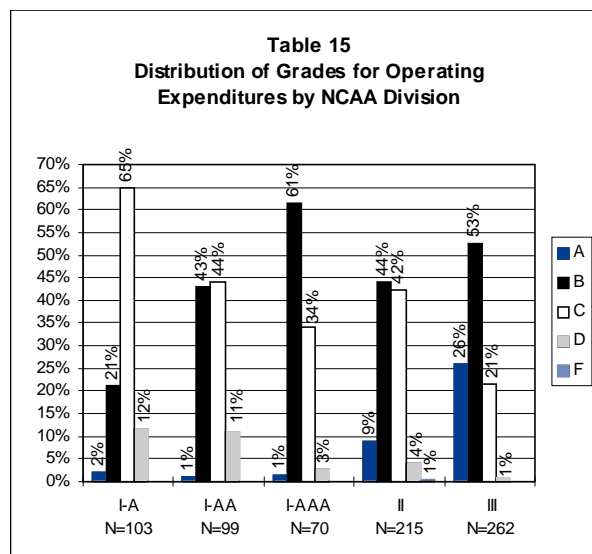
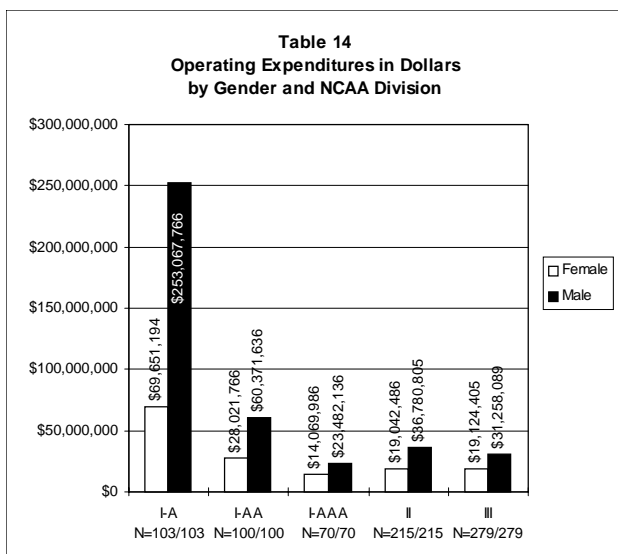
The findings show that women’s share of operating expenditures was, indeed, substantially lower than men’s.

Operating expenditures refer to the total institutional spending for lodging, meals, transportation, officials, uniforms, and equipments for both home and away games. Across all NCAA divisions, a total of \$554,870,270 was spent on operating expenses for men’s and women’s teams in 1995-96. Whereas men’s teams received 73% (\$404,960,433) of this total, women’s teams were budgeted 27% (\$149,909,837).²

In only a small number of schools did the women’s teams receive a share of the total operating expenditures that was proportionate to their numbers on campus. As Table 13 shows, women’s teams received the lowest portion of operating expenditures in Divisions I-A and I-AA (22% and 32% respectively). Women’s teams fared best in Division III, garnering 38% of the \$50,382,494 spent on operations. Table 14 shows the operating expenditures discrepancies in terms of dollars spent.

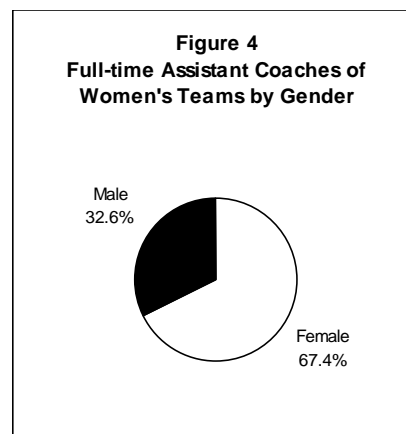
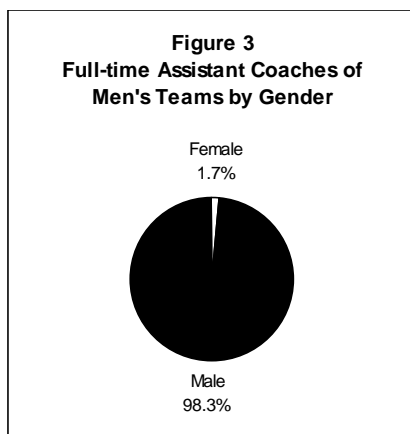
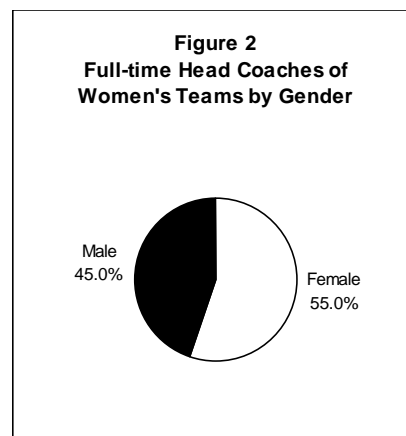
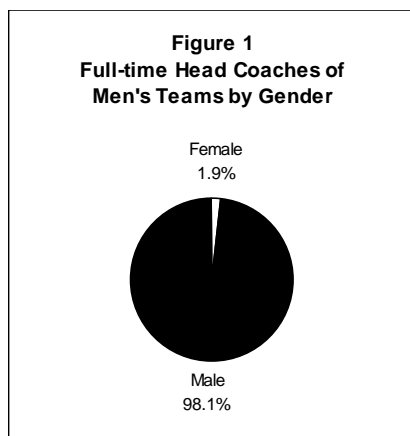
Table 15 presents the distribution of the “Operating Expenditures Grades” for each NCAA Division. Only a small percentage of “A’s” were awarded to Divisions I-A, I-AA, and I-AAA schools; i.e., 1.9%, 1%, and 1.4% respectively. Ironically, Division I-A schools, those with the largest budgets in the nation, received the highest percentage of “C” and “D” grades; i.e., 77%. More favorably, 9% of the Division II schools that supplied data received “A” grades for meeting the equity standard, while 25% of Division III schools did so.





Coaching Resources

The results clearly show that men dominated the college coaching ranks in 1995-96. Whereas less than two percent of women were employed as either full-time head or assistant coaches for men's teams, men filled 45% of full-time head and 33% of full-time assistant coaching positions for women's teams in this study. Men held 72% (n = 4,316) of the 5,962 full-time head coaching positions across all NCAA Divisions. Men also occupied 78% (n = 3,953) of the 5,059 full-time assistant coaching positions throughout all NCAA Divisions. In addition, Figures 1 and 2 show that men were also more likely to coach men's teams and almost equally as likely to coach women's teams.



Tables 16 and 17 report the average and median salaries for head coaches and assistant coaches by gender, team type, and by NCAA Division. The coaches of men's teams were also paid more than the coaches of women's teams and coed teams. In Division I-A, head coaches of women's teams make only \$0.63 for every dollar earned by head coaches of men's teams.

Table 16 Salaries for Head Coaches by Team Type and NCAA Divisions*					
Division	Statistic	Women s Teams	Men s Teams	Coed Teams	Total
I-A (N = 103)	Total	\$4,286,381	\$6,724,446	\$985,245	\$11,996,072
	% in Division	36%	56%	8%	
	Average	\$42,023	\$65,926	\$31,782	
	Median	\$43,036	\$64,681	\$31,026	
I-AA (N = 101)	Total	\$2,725,882	\$3,774,759	\$365,074	\$6,865,715
	% of Division	40%	55%	5%	
	Average	\$27,534	\$38,128	\$18,254	
	Median	\$28,893	\$38,404	\$15,507	
I-AAA (N = 70)	Total	\$1,639,386	\$2,252,017	\$270,519	\$4,161,922
	% in Division	39%	54%	7%	
	Average	\$23,420	\$32,172	\$15,029	
	Median	\$21,215	\$28,518	\$12,012	
II (N = 215)	Total	\$4,082,408	\$5,043,616	\$350,078	\$9,476,102
	% of Division	43%	53%	4%	
	Average	\$19,077	\$23,679	\$10,940	
	Median	\$15,705	\$21,250	\$5,029	
III (N = 279)	Total	\$3,370,510	\$3,880,354	\$96,129	\$7,346,994
	% in Division	46%	53%	1%	
	Average	\$12,577	\$15,040	\$10,421	
	Median	\$9,214	\$12,924	\$5,250	
All (N = 768)	Total	\$16,104,567	\$21,675,192	\$2,067,046	\$39,972,722
	% in Division	40%	54%	5%	
* Note that the "average" and "median" salaries above are based on average salaries reported by each institution. Percentages do not always add up to 100% due to rounding.					

The salary gap between coaches of women's and men's teams remains somewhat consistent across all the NCAA divisions, even in Division III where the argument that "coaches of men's teams get paid more because they generate revenues" does not apply because there are so few revenue-producing sports. Also, many men's sports in Divisions I-A, I-AA and I-AAA operate at a loss. Hence, we wonder about the extent to which the salary gap for coaches of men's and women's teams reflects a lack of institutional commitment to meeting the needs and interests of women athletes.

Table 17 Salaries for Assistant Coaches by Team Type and NCAA Division*					
Division	Statistic	Women s Teams	Men s Teams	Coed Teams	Total
I-A (N = 103)	Total	\$2,228,059	\$4,393,824	\$400,850	\$7,022,733
	% in Division	32%	63%	6%	
	Average	\$21,844	\$43,077	\$17,428	
	Median	\$22,217	\$43,869	\$18,209	
I-AA (N = 101)	Total	\$1,402,402	\$2,151,891	\$119,199	\$3,673,492
	% of Division	38%	59%	3%	
	Average	\$14,608	\$21,736	\$9,933	
	Median	\$13,851	\$20,956	\$6,333	
I-AAA (N = 70)	Total	\$875,102	\$1,244,850	\$95,558	\$2,215,510
	% in Division	40%	56%	4%	
	Average	\$12,501	\$17,784	\$7,963	
	Median	\$11,493	\$16,004	\$1,625	
II (N = 215)	Total	\$1,719,387	\$2,521,447	\$67,004	\$4,307,838
	% of Division	40%	59%	1%	
	Average	\$8,729	\$12,007	\$2,482	
	Median	\$5,900	\$8,526	\$1,761	
III (N = 279)	Total	\$708,904	\$1,064,253	\$227,531	\$2,000,688
	% in Division	35%	53%	11%	
	Average	\$2,685	\$2,093	\$3,205	
	Median	\$1,969	\$2,881	\$1,523	
All (N = 768)	Total	\$6,933,854	\$11,376,265	\$910,142	\$19,220,261
	% in Division	36%	59%	5%	
* Note that the average and median salaries above are based on average salaries reported by each institution. Percentages do not always add up to 100% due to rounding.					

Conclusions

During the last 25 years, female participation in sports has generally followed the creation of opportunities. When the Supreme Court opened the door to Little Leagues in the early '70s, girls ran through to play with the boys in their neighborhood. Similarly, when Title IX expanded the number of playing slots and scholarships for college women 25 years ago, women scrambled to grab them.

In spite of many gains, however, women athletes continue to play catch-up with the males on the not-so-level-playing fields of college sports. We found male athletes in Division I-A outnumbered their female counterparts by about 2-to-1 in 1995-96 (i.e., 66% to 34% respectively). Ironically, this gender ratio is very close to the 2-to-1 ratio of male-to-female students enrolled in higher education in 1970, when women comprised about 33% of the 3.6 million students enrolled in 2- and 4-year colleges, universities, graduate and professional schools. By 1994, however, women's enrollment share had leaped to 55%, or 8.2 million of the 15 million students nationwide³. Despite these trends, however, on most of the campuses in our study, the gender ratio in athletics remains mired in the pre-Title IX past. The increases in women's enrollment in higher education and involvement in intercollegiate athletics appear below in Tables 18 and 19.

American colleges and universities appear to be more strongly committed to meeting the needs and interests of male athletes than women athletes. Schools invested a disproportionately larger amount of scholarship aid and coaching salaries in the futures of young men rather than young women. On most campuses, women's share of the recruitment allocations did not even measure up to the percentage of women athletes on campus, let alone the percentage of women in the larger student body. Higher education's recruiting priorities appeared to be most often geared to maintaining men's advantage in college sports.

We also recognize that intercollegiate athletics have experienced unprecedented growth in recent decades and, further, that women's sports programs have expanded at a faster pace than men's sports programs. However, our findings show that the increases in the numbers of women's sports programs between 1978 and 1996 were not accompanied by a large-scale downsizing of men's programs⁴. Indeed, men's non-revenue sports programs netted losses only in D-IA and D-IAA schools, schools with the largest athletic budgets. Why might this be so?

Table 18
Percentage Increase in Women's Enrollment in American Higher Education

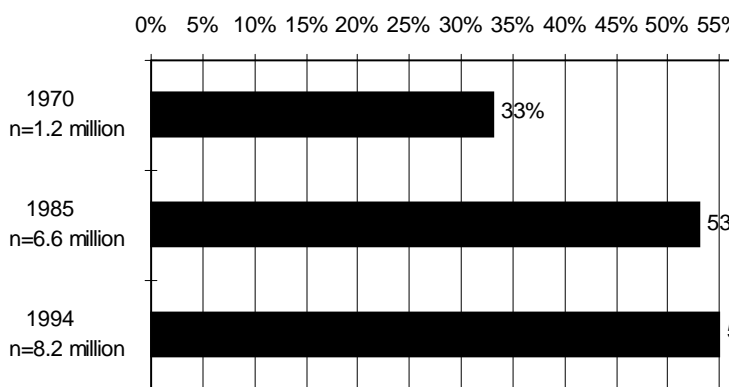
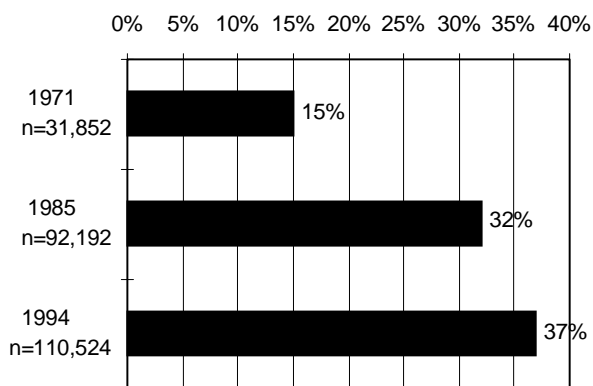


Table 19
Percentage of Women's Involvement in Intercollegiate Athletics



A recent NCAA report found that the increases in men's budgets between 1992 and 1997 were greater than the entire cost of women's programs⁵. In Division I-A, while women's programs gained \$400,230 in spending on recruitment, scholarships, and head coaching salaries, allocation for the men's programs increased by almost \$1.4 million⁶. Rather than blaming women athletes for program cuts that occurred in Divisions I-A and I-AA, therefore, it seems more likely that the cutbacks in men's nonrevenue sports and the shortchanging of women's sports may be related to overspending in other areas of the men's operating budget.

Finally, this survey was done in order to produce a factual basis for understanding and evaluating women's athletic opportunity in higher education. The publication of this "Gender Report Card" also confirms the Foundation's conviction that the significance and function of intercollegiate sport are primarily rooted in its educational mission. This study shows that, sadly, too few institutions of higher learning are "making the grade" when it comes to providing female student-athletes with the same athletic and educational resources as their male peers. Currently, too many schools seem content with only "average" performance in using the positive potential of intercollegiate athletics to enhance the lives of female student-athletes.

End Notes

1. Gloria Steinem's foreword was adapted from Gloria Steinem's "The Politics of Muscle," Moving Beyond Words, New York: Simon & Schuster, 1994.
2. Coed teams were allotted a total of \$7,791,218, about 1% of all operating expenditures. Coed expenditures were not taken into account here.
3. U.S. Department of Commerce, Economics and Statistics Administration, Bureau of the Census, Statistical Abstract of the United States 1996, p. 158.
4. The Women's Sports Foundation is not in favor of reducing athletic opportunities for men as the preferred method of achieving Title IX compliance. Indeed, Title IX does not require that men's sports opportunities be reduced in order to achieve equity. See the Women's Sports Foundation Position Paper, Expanding Opportunities for Girls and Women in Sports Without Eliminating Men's Sports (1997). East Meadow, New York; Women's Sports Foundation.
5. NCAA Gender Equity Study, 1997.
6. Dempsey: Women's Gains Coming Too Slowly (1997). The NCAA News, v. 34, #18, p. 1, 13.

Appendix A: Report Cards

The following is a list of each of the 767 institutions participating in this study. The institutions are grouped by the NCAA Division in which they competed during the 1995-96 school year, and listed alphabetically (For example, the University of Akron is listed in Division I-A under “U”). Some institutions compete in a different division for one or more sports. These schools are listed in the division in which they primarily participate. For example, Michigan Technological University competes in Division I for ice hockey, but Division II in all other sports, and is, therefore, listed under Division II.

The statistics listed in the chart of grades are defined as follows: % Females Enrolled refers to the percentage of females among all undergraduates enrolled; % Female Athletes refers to the percentage of all athletes on campus who participate on women’s teams; the first Grade category is the Athletic Participation Grade; % Scholarship refers to the percentage of athletic scholarship dollars awarded to participants on women’s teams; the following Grade is the Scholarship Allocation Grade; % Recruitment refers to the percentage of the total athletic recruitment budget spent on participants on women’s teams; the following grade is the Recruitment Spending Grade; % Budget refers to the percentage of the athletic operating budget spent on women’s teams; the following grade is the Operating Expenditures Grade; and the GPA is the Grade Point Average on a 4.00 scale resulting from the averaging of each school’s four grades. In the case of schools with incomplete information, only the grades given were averaged. For an explanation of the criterion used to determine grading, see page 6 in the Data Analysis section.

Division I-A

NCAA Division I-A Colleges N = 103	% Females Enrolled	% Female Athletes	Grade	% Scholarship	Grade	% Recruitment	Grade	% Budget	Grade	GPA/ Grade
Arizona State University	50.05%	30.08%	B-	36.78%	B	24.69%	C	23.74%	C	2.43/B-
Arkansas State University	57.50%	22.41%	D+	26.99%	C-	25.88%	C-	24.39%	C-	1.60/C-
Auburn University	47.45%	33.71%	B	38.37%	B+	16.77%	C-	25.22%	C+	2.58/B-
Ball State University	53.03%	35.10%	B-	36.83%	B-	27.22%	C	25.35%	C	2.35/B-
Baylor University	56.23%	20.69%	D+	31.31%	C+	18.01%	D+	23.60%	C-	1.65/C-
Boise State University	55.51%	31.27%	C+	37.45%	B-	26.29%	C	46.91%	B+	2.58/B-
Boston College	52.56%	37.29%	B-	31.48%	C+	20.29%	C-	27.54%	C	2.18/C+
Bowling Green State University	57.46%	37.53%	B-	30.43%	C	15.24%	D	20.72%	D+	1.75/C
Brigham Young University	51.71%	37.75%	B	29.90%	C+	24.50%	C	17.33%	C-	2.25/C+
California State University-Fresno	52.94%	37.36%	B-	37.18%	B-	29.98%	C+	22.80%	C-	2.35/B-
Central Michigan University	57.28%	35.88%	C+	37.49%	B-	28.12%	C	38.27%	B-	2.43/B-
Clemson University	45.06%	36.01%	B+	33.70%	B	18.46%	C	9.45%	D+	2.40/B-
Colorado State University	49.85%	42.89%	B+	34.70%	B-	26.61%	C+	25.29%	C+	2.65/B-
Duke University	48.87%	34.15%	B	27.46%	C+	28.55%	C+	17.17%	C-	2.33/C+
East Carolina University	57.23%	35.03%	C+	30.15%	C	20.49%	D+	22.40%	C-	1.83/C
Eastern Michigan University	58.06%	32.14%	C	35.30%	C+	23.77%	C-	23.50%	C-	1.93/C
Florida State University	54.66%	40.29%	B	43.38%	B	37.08%	B-	33.12%	C+	2.75/B
Georgia Institute of Technology	27.25%	28.10%	A	28.31%	A	14.94%	B	21.08%	B+	3.58/A-
Indiana University-Bloomington	54.38%	35.84%	B-	38.20%	B-	28.31%	C	32.80%	C+	2.43/B-
Iowa State University	43.23%	34.91%	B+	36.79%	B+	24.92%	B-	26.87%	B-	3.00/B
Kansas State University	45.56%	29.20%	B-	27.08%	B-	16.41%	C	14.93%	C-	2.28/C+
Kent State University	58.43%	34.73%	C+	38.31%	C+	27.09%	C-	28.34%	C-	2.00/C
Louisiana State University	49.61%	38.24%	B	38.65%	B	48.19%	A-	26.27%	C+	3.00/B
Louisiana Tech University	44.92%	25.67%	B-	28.98%	B-	20.76%	C+	21.29%	C+	2.50/B-
Miami University-Ohio	53.93%	33.28%	C+	30.88%	C+	24.96%	C	36.07%	B-	2.33/C+
Michigan State University	52.31%	38.24%	B	34.04%	B-	20.90%	C-	30.51%	C+	2.43/B-
Mississippi State University	41.16%	29.85%	B	31.83%	B+	30.22%	B	13.74%	C	2.83/B

NCAA Division I-A Colleges N = 103	% Females Enrolled	% Female Athletes	Grade	% Scholarship	Grade	% Recruitment	Grade	% Budget	Grade	GPA/ Grade
New Mexico State University	48.96%	38.14%	B	32.96%	B-	29.43%	B-	24.60%	C+	2.68/B-
North Carolina State University	39.67%	32.40%	B+	32.84%	B+	23.91%	B-	21.80%	B-	3.00/B
Northeast Louisiana University	58.65%	27.83%	C-	31.42%	C	16.73%	D	18.81%	D+	1.50/C-
Northern Illinois University	55.51%	36.76%	B-	39.64%	B-	31.84%	C+	23.36%	C-	2.35/B-
Northwestern University	50.89%	39.15%	B	35.40%	B-	19.45%	C-	24.02%	C	2.35/B-
Ohio State University	47.22%	41.34%	B+	43.26%	A-	30.86%	B-	26.67%	C+	3.00/B
Ohio University	54.31%	35.73%	B-	37.46%	B-	20.98%	C-	20.97%	C-	2.20/C+
Oklahoma State University	46.13%	24.18%	C+	27.73%	B-	17.57%	C	16.75%	C	2.25/C+
Oregon State University	44.12%	36.17%	B+	34.18%	B+	22.93%	C+	30.22%	B	2.98/B
Pennsylvania State University	44.66%	37.70%	B+	39.57%	B+	27.21%	B-	30.99%	B	3.08/B+
Purdue University	43.28%	37.16%	B+	33.48%	B+	31.50%	B	21.39%	C+	2.98/B
Rice University	44.84%	31.17%	B	31.37%	B	22.29%	C+	24.73%	C+	2.65/B-
Rutgers, SUNJ-New Brunswick	52.46%	40.49%	B	35.76%	B-	30.89%	C+	24.32%	C	2.50/B-
San Jose State University	51.16%	40.24%	B	36.08%	B-	31.32%	B-	38.02%	B	2.85/B
Southern Methodist University	52.71%	30.42%	C+	34.24%	B-	21.57%	C-	21.31%	C-	2.10/C+
Stanford University	49.67%	43.98%	B+	38.50%	B	27.70%	C+	27.92%	C+	2.73/B-
Syracuse University	50.94%	31.52%	B-	30.23%	C+	29.99%	C+	17.82%	C-	2.25/C+
Temple University	55.09%	43.30%	B	42.84%	B	15.99%	D+	24.41%	C-	2.25/C+
Texas A & M University	45.63%	33.89%	B	42.27%	A-	41.81%	A-	40.30%	B+	3.43/A-
Texas Tech University	45.96%	33.92%	B	34.98%	B	40.36%	B+	26.86%	B-	3.00/B
Tulane University	48.99%	28.72%	C+	26.22%	C+	17.82%	C-	10.86%	D+	1.90/C
United States Air Force Academy	14.70%	25.34%	A	None	NR	19.07%	A	6.28%	B+	3.77/A
United States Military Academy	11.93%	18.63%	A	None	NR	14.83%	A	12.94%	A	4.00/A
United States Naval Academy	13.70%	22.44%	A	None	NR	13.00%	A-	14.22%	A	3.90/A
University of Akron	53.54%	28.10%	C	27.61%	C	14.35%	D+	30.21%	C+	1.90/C
University of Alabama-Tuscaloosa	51.61%	32.37%	B-	41.35%	B	33.20%	B-	29.61%	C+	2.68/B-
University of Arizona	51.17%	37.96%	B	41.78%	B+	25.71%	C	15.64%	D+	2.40/B-
University of Arkansas-Fayetteville	46.65%	28.85%	B-	34.10%	B	22.75%	C+	16.35%	C-	2.43/B-
University of California-Berkeley	48.34%	37.56%	B	35.47%	B	22.44%	C	27.85%	C+	2.58/B-
University of California-Los Angeles	50.84%	38.57%	B	45.97%	A-	27.19%	C+	16.87%	C-	2.68/B-
University of Cincinnati	49.32%	28.22%	C+	24.99%	C+	9.27%	D	13.21%	D+	1.73/C-
University of Colorado-Boulder	47.37%	40.29%	B+	30.55%	B-	21.82%	C	21.03%	C	2.50/B-
University of Georgia	54.08%	33.12%	C+	38.53%	B-	0.00%	I	37.46%	B-	2.57/B-
University of Hawaii-Manoa	54.63%	32.67%	C+	35.42%	B-	19.82%	C-	32.04%	C+	2.25/C+
University of Houston	51.19%	30.43%	C+	35.83%	B-	27.55%	C+	22.91%	C	2.33/C+
University of Illinois-Champaign-Urbana	46.01%	30.16%	B-	38.09%	B+	20.18%	C	31.02%	B	2.75/B
University of Iowa	52.99%	41.32%	B	39.48%	B	35.88%	B-	37.80%	B-	2.85/B
University of Kansas	49.54%	47.49%	A-	37.72%	B	25.13%	C+	34.93%	B	3.00/B
University of Kentucky	49.23%	32.05%	B-	37.63%	B	22.01%	C	11.26%	D+	2.25/C+
University of Louisville	53.11%	35.68%	B-	30.01%	C+	14.23%	D+	18.22%	C-	2.00/C
University of Maryland-College Park	47.75%	41.16%	B+	38.25%	B+	26.81%	C+	20.69%	C	2.73/B-
University of Memphis	55.04%	27.89%	C	30.43%	C+	16.31%	D+	11.08%	D	1.65/C-
University of Michigan	48.87%	40.48%	B+	41.94%	B+	25.72%	C+	26.83%	C+	2.80/B
University of Minnesota-Minneapolis	49.28%	36.44%	B	34.32%	B	21.34%	C	34.48%	B	2.75/B
University of Mississippi	51.62%	28.48%	C+	31.12%	C+	31.99%	B-	17.19%	C-	2.25/C+
University of Missouri-Columbia	52.38%	33.92%	B-	39.25%	B	23.07%	C	29.19%	C+	2.50/B-
University of Nebraska-Lincoln	45.75%	31.68%	B	37.14%	B+	20.15%	C	14.86%	C-	2.50/B-
University of Nevada-Reno	51.37%	37.54%	B	36.07%	B-	42.28%	B+	21.89%	C	2.75/B
University of New Mexico	55.74%	35.24%	C+	34.50%	C+	18.45%	D+	22.64%	C-	1.90/C

NCAA Division I-A Colleges N = 103	% Females Enrolled	% Female Athletes	Grade	% Scholarship	Grade	% Recruitment	Grade	% Budget	Grade	GPA/ Grade
University of North Carolina-Chapel Hill	59.84%	41.13%	B-	41.31%	B-	17.74%	D	18.84%	D	1.85/C
University of North Texas	51.64%	39.29%	B	30.25%	C+	22.83%	C	21.72%	C	2.33/C+
University of Notre Dame	44.08%	14.92%	C	33.22%	B	19.80%	C+	22.10%	C+	2.40/B-
University of Oklahoma	44.85%	29.47%	B-	35.20%	B+	21.52%	C+	21.44%	C+	2.65/B-
University of Oregon	51.44%	35.79%	B-	31.13%	C+	23.69%	C	14.35%	D+	2.08/C+
University of Pittsburgh	51.27%	28.43%	C+	30.12%	C+	31.25%	C+	26.29%	C+	2.30/C+
University of South Carolina-Columbia	53.75%	35.82%	B-	38.76%	B	23.37%	C-	33.73%	B-	2.53/B-
University of Southern California	47.28%	21.79%	C	34.00%	B	11.03%	D+	12.36%	C-	2.00/C
University of Southern Mississippi	56.49%	20.58%	D+	25.26%	C-	28.04%	C	26.66%	C	1.75/C
University of Southwestern Louisiana	56.55%	21.77%	C-	26.51%	C-	16.60%	D+	7.37%	D-	1.35/C-
University of Tennessee-Knoxville	49.45%	33.82%	B-	38.15%	B	17.80%	C-	18.96%	C-	2.28/C+
University of Texas-Austin	49.12%	32.95%	B-	39.35%	B+	34.01%	B-	16.48%	C-	2.60/B-
University of Texas-El Paso	54.00%	36.63%	B-	30.65%	C+	32.28%	C+	31.90%	C+	2.40/B-
University of Toledo	52.16%	40.56%	B	34.52%	B-	37.41%	B	29.01%	C+	2.75/B
University of Tulsa	53.69%	37.07%	B-	30.88%	C+	33.05%	C+	15.42%	D+	2.15/C+
University of Utah	45.15%	40.89%	A-	36.43%	B+	23.44%	C+	26.79%	B-	3.00/B
University of Virginia	52.99%	40.97%	B	37.64%	B-	27.13%	C	23.94%	C	2.43/B-
University of Washington	50.01%	46.23%	A-	43.84%	B+	30.10%	B-	30.41%	B-	3.10/B+
University of Wisconsin-Madison	51.58%	40.45%	B	35.01%	B-	26.94%	C+	27.92%	C+	2.58/B-
University of Wyoming	49.27%	29.62%	B-	27.44%	C+	16.18%	C-	15.81%	C-	2.10/C+
Utah State University	51.00%	40.71%	B	28.18%	C+	15.62%	D+	25.87%	C	2.15/C+
Vanderbilt University	46.73%	41.37%	B+	30.71%	B-	23.31%	C+	31.75%	B	2.83/B
Virginia Polytechnic Institute and St. Univ.	41.43%	39.85%	A-	32.25%	B+	21.89%	B-	18.90%	C+	3.00/B
Wake Forest University	48.39%	34.42%	B	26.18%	C+	19.64%	C	25.50%	C+	2.40/B-
Washington State University	46.99%	46.15%	A-	43.28%	A-	24.62%	C+	34.77%	B	3.18/B+
West Virginia University	46.66%	25.62%	C+	28.40%	B-	33.68%	B	17.80%	C	2.50/B-
Western Michigan University	53.62%	25.80%	C	30.48%	C+	29.85%	C+	30.79%	C+	2.23/C+

Average — 2.48 Median — 2.43 Lowest — 1.35 Highest — 4.00

The institutions in Division I-A which either responded too late to be included in this study or did not respond at all are as follows: San Diego State University, Texas Christian University, University of Alabama at Birmingham, University of Miami

Division I-AA

NCAA Division I-AA Colleges N = 100	% Females Enrolled	% Female Athletes	Grade	% Scholarship	Grade	% Recruitment	Grade	% Budget	Grade	GPA/ Grade
Virginia Military Institute (all male)	0.00%	N/A	N/A	N/A	N/A	N/A	N/A	N/A	N/A	N/A
Appalachian State University	52.59%	34.42%	B	27.53%	C	35.00%	B-	33.08%	B-	2.60/B-
Austin Peay State University	54.29%	34.32%	B	31.91%	C+	23.81%	C-	28.44%	C	2.25/C+
Boston University	55.40%	44.94%	B	32.40%	C+	23.25%	C-	27.28%	C	2.25/C+
Brown University	52.46%	45.74%	B+	N/A	N/A	27.77%	C+	39.89%	B	2.87/B
Bucknell University	49.72%	37.93%	B	29.52%	C+	24.11%	C	31.71%	B-	2.50/B-
Butler University	60.42%	31.46%	C+	47.96%	B	39.03%	C+	33.89%	C	2.40/B-
Calif. Poly. State Univ.-San Luis Obispo	42.40%	37.39%	B+	31.27%	B	36.61%	B+	30.04%	B	3.15/B+
California State University-Northridge	54.79%	37.21%	B	43.95%	B	42.05%	B	40.61%	B	3.00/B
California State University-Sacramento	54.11%	37.96%	B	44.02%	B	27.50%	C	32.51%	C+	2.58/B-

NCAA Division I-AA Colleges N = 100	% Females Enrolled	% Female Athletes	Grade	% Scholarship	Grade	% Recruitment	Grade	% Budget	Grade	GPA/ Grade
Canisius College	46.79%	30.53%	B	49.22%	A	20.94%	C	33.80%	B	3.00/B
Central Connecticut State University	50.49%	36.49%	B	48.05%	A-	36.07%	B	33.23%	B-	3.10/B+
Charleston Southern University	51.99%	35.84%	B	41.60%	B	34.27%	B-	29.49%	C+	2.75/B
Colgate University	51.87%	39.12%	B	32.35%	B-	20.86%	C-	31.53%	C+	2.43/B-
College of the Holy Cross	53.47%	42.58%	B	36.62%	B-	14.70%	D+	24.32%	C	2.25/C+
College of William and Mary	58.13%	47.07%	B	38.76%	B-	33.10%	C	38.71%	B-	2.60/B-
Columbia University	59.84%	38.94%	B-	N/A	N/A	19.91%	D+	22.63%	D+	1.77/C+
Cornell University	46.78%	37.28%	B+	N/A	N/A	27.69%	B-	40.58%	B+	3.10/B+
Dartmouth College	47.59%	47.17%	A-	N/A	N/A	32.87%	B	40.27%	B+	3.33/B+
Davidson College	48.04%	37.47%	B	45.21%	A-	34.38%	B	38.03%	B	3.18/B+
Drake University	59.21%	26.24%	C	55.74%	A-	39.28%	B-	35.72%	C+	2.68/B-
Duquesne University	56.74%	37.50%	B	47.04%	B+	33.54%	C+	37.16%	B-	2.83B
East Tennessee State University	58.22%	29.69%	C+	28.98%	C	27.22%	C-	24.86%	C-	1.93/C
Eastern Illinois University	56.23%	39.48%	B	31.35%	C+	21.75%	C-	37.87%	B-	2.43/B-
Eastern Kentucky University	55.98%	36.81%	B	33.68%	C+	34.71%	C+	32.33%	C+	2.48/B-
Eastern Washington University	57.12%	34.57%	B-	32.68%	C+	32.55%	C+	33.58%	C+	2.40/B-
Fairfield University	55.18%	38.70%	B	49.93%	B+	24.09%	C-	38.12%	B-	2.68/B-
Florida A & M University	58.15%	29.70%	C+	28.24%	C	29.01%	C	22.40%	D+	1.90/C
Fordham University	55.03%	31.91%	B-	31.84%	C+	34.57%	C+	34.75%	C+	2.40/B-
Furman University	54.39%	31.68%	B-	28.35%	C	38.08%	B-	32.55%	C+	2.43/B-
Georgia Southern University	54.32%	27.76%	C+	26.45%	C	19.63%	C-	24.37%	C	2.00/C
Grambling State University	56.39%	29.75%	C+	28.89%	C	28.59%	C	23.15%	C-	2.00/C
Harvard University	44.21%	40.02%	A-	N/A	N/A	20.09%	C+	35.05%	B+	3.10/B+
Howard University	61.95%	30.97%	C	29.68%	C-	31.08%	C-	26.39%	D+	1.68/C-
Idaho State University	58.07%	35.89%	B-	35.03%	C+	29.40%	C	36.17%	C+	2.33/C+
Illinois State University	56.60%	40.81%	B	44.39%	B	54.40%	A-	42.57%	B	3.18/B+
Indiana State University	52.15%	30.65%	B-	32.93%	B-	33.79%	B-	27.90%	C+	2.60/B-
Iona College	51.12%	31.25%	B	47.46%	A-	20.84%	C-	23.94%	C	2.60/B-
Jackson State University	58.26%	24.44%	C	23.50%	C-	32.98%	C	20.82%	D+	1.75/C
James Madison University	54.72%	39.65%	B	38.99%	B-	31.42%	C+	34.18%	C+	2.58/B-
Lafayette College	46.92%	43.18%	A-	36.42%	B	26.58%	C+	35.58%	B	3.00/B
Lehigh University	37.47%	28.00%	B+	29.56%	B+	23.11%	B	20.69%	B-	3.08/B+
Liberty University	50.74%	32.09%	B	26.13%	C+	7.35%	D-	23.67%	C	2.00/C
Marist College	57.91%	37.76%	B-	49.87%	B+	34.93%	C+	34.34%	C+	2.65/B-
Marshall University	53.23%	22.67%	C	33.34%	B-	28.11%	C	20.84%	C-	2.10/C+
McNeese State University	57.92%	27.36%	C	29.49%	C	22.12%	D+	22.47%	D+	1.65/C-
Middle Tennessee State University	54.44%	28.31%	C+	30.77%	C+	27.99%	C	24.98%	C	2.15/C+
Mississippi Valley State University	57.05%	32.76%	B-	24.55%	C-	19.35%	D+	19.44%	D+	1.75/C
Monmouth University	54.81%	33.08%	B-	54.71%	A-	38.51%	B-	35.39%	B-	2.95/B
Montana State University-Bozeman	43.81%	39.47%	A-	34.63%	B+	25.29%	B-	33.98%	B+	3.25/B+
Morehead State University	57.48%	29.39%	C+	31.73%	C	46.64%	B	27.22%	C-	2.25/C+
Murray State University	53.88%	23.26%	C	26.10%	C	20.10%	C-	17.68%	D+	1.75/C
Nicholls State University	61.30%	29.15%	C	33.63%	C	37.43%	C+	25.29%	D+	1.90/C
North Carolina A & T State University	50.39%	31.43%	B	30.94%	B-	27.88%	C+	34.84%	B-	2.68/B-
Northeastern University	44.45%	38.24%	B+	31.21%	B	20.99%	C+	33.02%	B	2.90/B
Northern Arizona University	54.14%	8.91%	D-	39.15%	B	25.36%	C	22.50%	C-	1.85/C
Northwestern State University	60.95%	31.31%	C+	32.24%	C	10.40%	F	25.04%	D+	1.40/C-
Prairie View A & M University	52.45%	36.88%	B	No data	I	9.61%	D-	26.70%	C	1.90/C
Sam Houston State University	53.74%	29.64%	B-	31.98%	C+	21.66%	C-	30.74%	C+	2.25/C+

NCAA Division I-AA Colleges N = 100	% Females Enrolled	% Female Athletes	Grade	% Scholarship	Grade	% Recruitment	Grade	% Budget	Grade	GPA/ Grade
Samford University	61.42%	28.02%	C	27.19%	C-	4.99%	F	18.57%	D	1.18/D+
Siena College	53.74%	36.90%	B	52.22%	A-	34.64%	B-	32.98%	C+	2.93/B
South Carolina State University	57.81%	32.80%	C+	25.36%	C-	18.36%	D+	41.20%	B-	2.00/C
Southeast Missouri State University	57.89%	38.52%	B	37.72%	C+	29.08%	C	40.07%	B-	2.50/B-
Southern Illinois University at Carbondale	41.60%	36.25%	B+	37.93%	A-	40.67%	A-	32.85%	B+	3.50/A-
Southern Utah University	55.74%	38.11%	B	35.75%	B-	25.79%	C	23.33%	C-	2.35/B-
Southwest Missouri State University	54.19%	31.23%	B-	36.67%	B-	35.50%	B-	36.00%	B-	2.70/B-
Southwest Texas State University	53.89%	26.73%	C+	35.23%	B-	36.26%	B-	27.10%	C	2.43/B-
St. Francis College of Pennsylvania	52.66%	37.74%	B	50.13%	A-	22.79%	C	37.87%	B	2.93/B
St. John's University	54.70%	35.06%	B	46.12%	B+	29.62%	C	30.47%	C+	2.65/B-
St. Mary's College of California	58.39%	35.22%	B-	41.45%	B-	30.76%	C	37.19%	C+	2.43/B-
Stephen F. Austin State University	54.29%	35.50%	B	37.67%	B-	28.99%	C	37.35%	B-	2.60/B-
SUNY-Buffalo	42.91%	35.16%	B+	29.89%	B	26.83%	B-	29.89%	B	3.00/B
Tennessee State University	61.38%	37.44%	B-	30.82%	C-	29.19%	C-	39.26%	C+	2.10/C+
Tennessee Technological University	45.62%	38.11%	B+	32.72%	B	25.77%	B-	30.90%	B	3.00/B
Towson State University	59.33%	39.55%	B	54.79%	A-	43.50%	B-	45.29%	B	3.10/B+
University of Connecticut	50.67%	37.13%	B	41.10%	B+	26.17%	C+	32.10%	B-	2.83/B
University of Dayton	50.77%	40.65%	B	54.37%	A	37.84%	B	47.78%	A-	3.43/A-
University of Delaware	56.78%	39.19%	B	35.10%	C+	33.65%	C+	19.93%	D+	2.23/C+
University of Evansville	58.58%	33.57%	C+	51.36%	B+	33.39%	C	28.93%	C	2.40/B-
University of Idaho	42.77%	32.58%	B	33.35%	B+	21.31%	C+	32.72%	B	2.90/B
University of Maine-Orono	46.55%	39.81%	B+	25.84%	C+	19.15%	C	33.47%	B	2.65/B-
University of Montana	51.45%	39.19%	B	39.02%	B	27.92%	C+	32.99%	B-	2.75/B
University of New Hampshire	56.82%	43.38%	B	41.17%	B-	25.58%	C-	32.83%	C+	2.43/B-
University of Northern Iowa	57.40%	30.29%	C+	32.47%	C+	26.43%	C-	35.90%	C+	2.15/C+
University of Pennsylvania	46.70%	36.69%	B	N/A	N/A	25.58%	C+	32.99%	B	2.77/B
University of Rhode Island	54.18%	38.17%	B	39.34%	B	45.49%	B+	36.31%	B-	3.00/B
University of Richmond	49.39%	24.00%	C+	27.16%	C+	25.03%	C+	20.79%	C	2.23/C+
University of San Diego	57.46%	36.34%	B-	51.70%	B+	30.49%	C	34.00%	C+	2.58/B-
University of Tennessee-Chattanooga	56.58%	32.11%	B-	31.98%	C+	23.36%	C-	22.81%	C-	2.10/C+
University of Tennessee-Martin	56.04%	29.71%	C+	29.83%	C	27.02%	C	32.30%	C+	2.15/C+
Valparaiso University	55.65%	31.32%	B-	42.97%	B	32.28%	C+	37.03%	B-	2.68/B-
Villanova University	50.82%	35.32%	B	35.71%	B-	27.30%	C+	31.48%	B-	2.68/B-
Wagner College	58.10%	32.83%	C+	43.00%	B-	29.41%	C	37.19%	C+	2.33/C+
Weber State University	52.14%	38.64%	B	33.33%	B-	28.00%	C+	29.57%	C+	2.58/B-
Western Carolina University	50.76%	28.71%	B-	29.75%	C+	33.47%	B-	23.59%	C	2.43/B-
Western Illinois University	47.89%	32.32%	B	32.40%	B-	34.40%	B	37.63%	B	2.93/B
Western Kentucky University	55.33%	27.02%	C+	29.60%	C	20.01%	D+	29.30%	C	1.90/C
Wofford College	44.49%	33.81%	B	26.93%	B-	15.81%	C	29.21%	B-	2.60/B-
Yale University	48.67%	41.11%	B+	N/A	N/A	31.18%	B-	41.20%	B+	3.10/B+
Youngstown State University	51.34%	27.53%	B-	34.17%	B-	19.20%	C-	36.41%	B	2.53/B-

Average 2.51 Median 2.58 Lowest 1.18 Highest 3.50

The institutions in Division I-AA which either responded too late to be included in this study or did not respond at all are as follows: Alcorn State University, Bethune-Cookman College, Delaware State University, Georgetown University, Hampton University, Howard Payne University, Montana State University-Missoula, Robert Morris College, Saint Peter's College, Southern University, Troy State University, University of Arkansas-Pine Bluff

Division I-AAA

NCAA Division I-AAA Colleges N = 70	% Females Enrolled	% Female Athletes	Grade	% Scholarship	Grade	% Recruitment	Grade	% Budget	Grade	GPA/ Grade
American University	59.74%	54.50%	B+	46.38%	B	41.58%	B-	47.80%	B	3.00/B
Belmont University	58.85%	37.14%	C+	47.21%	B	27.78%	C-	47.05%	B	2.50/B-
Bradley University	52.41%	45.49%	B+	48.33%	A-	29.22%	C+	31.53%	C+	2.90/B
Campbell University	57.20%	46.75%	B	48.43%	B+	52.16%	B+	46.43%	B	3.15/B+
Centenary College of Louisiana	57.69%	47.75%	B+	44.69%	B	5.70%	F	37.30%	C+	2.15/C+
Chicago State University	70.45%	40.00%	C-	52.81%	B-	52.38%	B-	45.70%	C+	2.35/B-
Coastal Carolina University	57.95%	41.98%	B-	50.52%	B+	27.77%	C-	36.51%	C+	2.50/B-
College of Charleston	61.73%	38.74%	C+	52.41%	B+	49.69%	B	34.92%	C	2.65/B-
Coppin State College	71.74%	56.08%	B-	46.53%	C	33.22%	D+	43.07%	C	2.00/C
Creighton University	59.19%	54.12%	B+	52.22%	B+	28.60%	C-	31.23%	C	2.58/B-
DePaul University	57.19%	44.15%	B	58.26%	A	No data	I	40.76%	B-	3.23/B+
Fairleigh Dickinson University	54.22%	35.58%	B-	44.61%	B+	28.03%	C	35.10%	B-	2.68/B-
Florida Atlantic University	56.68%	43.13%	B	49.95%	B+	39.96%	B-	48.69%	B+	3.08/B+
Florida International University	56.77%	41.86%	B	50.81%	B+	38.23%	B-	41.78%	B	3.00/B
George Mason University	55.68%	42.86%	B	44.73%	B	48.69%	B+	39.32%	B-	3.00/B
George Washington University	54.18%	48.58%	B+	53.22%	A-	42.01%	B	44.12%	B	3.25/B+
Georgia State University	59.11%	37.93%	C+	54.40%	A-	48.83%	B	45.04%	B	3.00/B
Jacksonville University	51.52%	44.98%	B+	38.49%	B	5.02%	D-	10.03%	D	2.00/C
La Salle University	53.81%	47.20%	B+	51.02%	A-	33.84%	B-	42.83%	B	3.18/B+
Lamar University	54.71%	36.67%	B-	45.91%	B+	38.48%	B-	33.05%	C+	2.75/B
Long Beach State University	55.29%	39.02%	B-	52.56%	A-	36.94%	B-	43.99%	B	3.03/B
Long Island University-Brooklyn	68.05%	39.84%	C	46.11%	C+	53.57%	B	42.15%	C	2.33/C+
Loyola College (MD)	55.06%	48.82%	B+	44.58%	B	33.95%	C+	41.49%	B	2.90/B
Loyola University Chicago	61.13%	47.69%	B	55.81%	B+	29.45%	C-	41.83%	B-	2.68/B+
Manhattan College	44.07%	43.15%	A-	49.32%	A	39.30%	A-	42.63%	A-	3.78/A
Marquette University	51.92%	42.53%	B+	51.15%	A-	40.66%	B	34.89%	B-	3.18/B+
Mercer University	54.14%	40.59%	B	50.00%	A-	46.08%	B+	42.66%	B	3.25/B+
Mount Saint Mary's College	53.45%	44.03%	B+	46.28%	B+	27.57%	C	33.49%	B-	2.83/B
Niagara University	61.88%	46.38%	B-	49.23%	B	16.50%	D-	36.70%	C	2.10/C+
Northeastern Illinois University	59.73%	41.62%	B-	50.91%	B+	46.32%	B	33.36%	C	2.75/B
Old Dominion University	53.71%	47.95%	B+	53.96%	A	50.64%	A-	43.74%	B+	3.58/A-
Oral Roberts University	57.19%	45.60%	B	No data	I	No data	I	43.43%	B	3.00/B
Providence College	56.58%	45.71%	B	46.14%	B	23.32%	C-	29.98%	C	2.43/B-
Radford University	57.42%	47.78%	B+	53.96%	A-	49.22%	B+	43.38%	B	3.33/B+
Rider University	56.97%	38.29%	B-	47.84%	B+	37.32%	B-	40.03%	B-	2.85/B
Saint Louis University	53.08%	44.72%	B+	48.29%	A-	28.10%	C+	20.47%	C-	2.75/B
Southeastern Louisiana University	59.88%	48.51%	B	55.94%	A-	61.60%	A	47.74%	B	3.43/A-
St. Bonaventure University	50.88%	47.37%	A-	52.36%	A	24.14%	C	41.56%	B+	3.25/B+
St. Francis College	57.35%	41.33%	B-	47.92%	B+	26.49%	C-	36.81%	C+	2.50/B-
St. Joseph's University	52.73%	45.00%	B+	48.89%	A-	44.19%	B+	46.53%	B+	3.40/A-
Stetson University	57.03%	48.21%	B+	48.51%	B+	26.71%	C-	43.58%	B	2.83/B
University of Arkansas-Little Rock	55.81%	37.36%	B-	40.58%	B-	10.40%	D-	28.29%	C	2.03/C
University of California-Irvine	52.80%	40.91%	B	50.84%	A-	44.44%	B+	47.01%	B+	3.33/B+
University of Detroit Mercy	54.92%	47.54%	B+	50.05%	A-	34.00%	C+	39.55%	B-	3.00/B
University of Hartford	48.48%	38.69%	B+	49.15%	A	59.01%	A	38.89%	B+	3.65/A-
University of Illinois-Chicago	54.47%	40.46%	B	45.13%	B+	31.69%	C+	42.15%	B	2.90/B
University of Maryland-Baltimore County	50.26%	39.46%	B	45.81%	A-	26.68%	C+	38.18%	B	3.00/B

NCAA Division I-AAA Colleges N = 70	% Females Enrolled	% Female Athletes	Grade	% Scholarship	Grade	% Recruitment	Grade	% Budget	Grade	GPA/ Grade
University of Maryland-Eastern Shore	58.69%	41.34%	B-	40.22%	B-	38.01%	C+	32.88%	C	2.43/B-
University of Missouri-Kansas City	55.43%	46.15%	B+	48.47%	B+	32.12%	C+	46.23%	B+	3.05/B+
University of New Orleans	55.46%	43.28%	B	50.08%	B+	20.77%	C-	32.81%	C+	2.58/B-
University of North Carolina-Asheville	54.92%	42.67%	B	47.41%	B+	34.80%	C	37.33%	B-	2.75/B
University of North Carolina-Charlotte	50.85%	46.12%	A-	51.64%	A	45.36%	B+	33.09%	B-	3.43/A-
University of North Carolina-Greensboro	64.41%	41.63%	C+	51.58%	B	47.78%	B-	45.74%	B-	2.68/B-
University of North Carolina-Wilmington	54.26%	47.20%	B+	48.47%	B+	36.47%	B-	32.24%	C+	2.90/B
University of Portland	57.29%	40.91%	B-	48.29%	B+	28.82%	C	42.93%	B	2.75/B
University of San Francisco	63.57%	48.15%	B-	46.46%	B-	28.99%	C-	40.72%	C+	2.35/B-
University of South Alabama	54.83%	43.19%	B	50.33%	A-	41.85%	B	30.71%	C+	3.00/B
University of South Florida	53.03%	44.95%	B+	39.70%	B	21.22%	C-	26.66%	C	2.50/B-
University of Texas-Arlington	50.40%	47.02%	A-	58.05%	A	44.17%	B+	44.69%	B+	3.58/A-
University of Texas-Pan American	57.43%	37.89%	B-	47.74%	B+	48.08%	B+	38.52%	B-	3.00/B
University of Texas-San Antonio	53.33%	46.02%	B+	53.05%	A-	34.03%	B-	44.02%	B+	3.25/B+
University of the Pacific	54.83%	37.88%	B-	35.90%	B-	39.82%	B-	21.66%	C-	2.45/B-
University of Vermont	54.26%	48.20%	B+	45.87%	B+	28.35%	C	43.33%	B	2.90/B
University of Wisconsin-Green Bay	62.27%	55.87%	B+	58.21%	A-	58.67%	A-	35.90%	C	3.18/B+
University of Wisconsin-Milwaukee	52.53%	44.98%	B+	52.55%	A	23.10%	C	45.94%	B+	3.15/B+
Virginia Commonwealth University	60.00%	42.86%	B-	51.94%	B+	22.96%	D+	24.70%	D+	2.15/C+
Wichita State University	53.13%	49.27%	A-	55.88%	A	40.82%	B	39.81%	B	3.43/A-
Winthrop University	68.34%	40.49%	C	48.79%	B-	36.22%	C-	42.45%	C	2.10/C+
Wright State University	53.56%	47.52%	B+	49.13%	A-	40.39%	B	39.08%	B	3.25/B+
Xavier University	56.04%	43.04%	B	47.50%	B+	19.58%	D+	38.31%	B-	2.58/B-

Average 2.86 Median 2.90 Lowest 2.00 Highest 3.78

The institutions in Division I-AAA which either responded too late to be included in this study or did not respond at all are as follows: California State University-Fullerton, Centenary College (NJ), Cleveland State University, Drexel University, Gonzaga University, Loyola Maramount University, Pepperdine University, Santa Clara University, Seton Hall University, University of California-Santa Barbara

Division II

NCAA Division II Colleges N = 215	% Females Enrolled	% Female Athletes	Grade	% Scholarship	Grade	% Recruitment	Grade	% Budget	Grade	GPA/ Grade
Abilene Christian University	51.35%	26.20%	C	31.41%	B-	29.42%	C+	29.42%	C+	2.33/C+
Alderson-Broaddus College	59.08%	44.90%	B	46.11%	B	50.00%	B+	45.85%	B	3.08/B+
Anderson College	56.37%	34.31%	C+	38.67%	B-	36.19%	C+	36.51%	B-	2.50/B-
Angelo State University	53.74%	30.67%	C+	39.91%	B	32.06%	C+	38.28%	B-	2.58/B-
Arkansas Tech University	55.08%	22.22%	C-	23.44%	C-	40.12%	B	25.31%	C	2.10/C+
Armstrong Atlantic State University	66.65%	41.38%	C	47.75%	B-	39.84%	C	45.08%	C+	2.25/C+
Ashland University	49.54%	29.44%	C+	31.17%	B-	38.83%	B	30.18%	B-	2.68/B-
Assumption College	59.53%	34.34%	C	50.00%	B+	45.25%	B	28.34%	C-	2.50/B-
Augusta State University	63.00%	39.39%	C+	42.81%	C+	38.54%	C+	38.26%	C+	2.30/C+
Augustana College	65.10%	36.82%	C	28.18%	D+	35.08%	C-	31.22%	C-	1.68/C-
Barton College	63.76%	43.66%	C+	47.66%	B-	27.69%	D+	42.52%	C+	2.15/C+
Bellarmino College	63.32%	50.24%	B	56.50%	B+	48.94%	B	45.98%	B-	3.00/B
Belmont Abbey College	52.26%	37.18%	B-	42.46%	B+	44.10%	B+	37.67%	B	3.08/B+
Bemidji State University	50.00%	30.92%	B-	39.22%	B	24.93%	C	46.41%	A-	2.85/B

NCAA Division II Colleges N=215	% Females Enrolled	% Female Athletes	Grade	% Scholarship	Grade	% Recruitment	Grade	% Budget	Grade	GPA/ Grade
Bentley College	42.55%	32.02%	B	45.50%	A	39.02%	A-	39.93%	A-	3.60/A-
Bloomsburg University	62.56%	44.12%	B-	49.54%	B	36.53%	C	41.81%	C+	2.50/B-
Bluefield State College	58.51%	43.62%	B	47.65%	B	36.00%	C+	42.04%	B-	2.75/B
Bryant College	41.65%	41.99%	A	49.06%	A	44.03%	A	29.46%	B	3.75/A
California State Polytechnic University-Pomona	42.50%	38.86%	A-	49.12%	A	50.30%	A	45.16%	A	3.93/A
California State University-Bakersfield	63.20%	43.41%	B-	40.56%	C+	29.26%	C-	43.80%	B-	2.35B-
California State University-Chico	50.10%	36.48%	B	No data	I	34.60%	B-	41.90%	B+	3.00/B
California State University-Dominguez Hills	62.50%	43.88%	B-	52.97%	B+	No data	I	45.65%	B-	2.90/B
California State University-Hayward	62.12%	51.35%	B	No data	I	35.64%	C	56.14%	B+	2.77/B
California State University-Los Angeles	58.32%	48.33%	B+	50.82%	B+	28.55%	C	41.38%	B-	2.83/B
California State University-San Bernardino	61.36%	43.79%	B-	42.40%	B-	4.26%	F	42.13%	B-	2.03/C
California State University-Stanislaus	59.74%	38.38%	C+	No data	I	49.85%	B+	42.76%	B-	2.77/B
California University of Pennsylvania	50.30%	23.57%	C	38.62%	B	16.73%	C-	29.16%	C+	2.25/C+
Cameron University	56.40%	44.34%	B	50.76%	B+	47.27%	B+	34.59%	C+	2.98/B
Central Missouri State University	52.59%	35.24%	B-	35.61%	B-	36.11%	B-	39.89%	B	2.78/B
Central Washington University	50.98%	43.88%	B+	82.84%	A	32.72%	B-	32.49%	B-	3.18/B+
Chaminade University	55.73%	32.05%	C+	44.59%	B	32.50%	C+	25.58%	C-	2.33/C+
Christian Brothers University	50.51%	44.97%	B+	41.94%	B+	50.00%	A-	49.38%	A-	3.50/A-
Clarion University of Pennsylvania	59.64%	34.06%	C	33.21%	C	21.96%	D+	22.38%	D+	1.65/C-
Clayton State College	61.47%	51.39%	B	54.52%	B+	37.27%	C+	40.94%	C+	2.73/B-
Coker College	63.58%	40.65%	C+	42.12%	C+	50.68%	B	48.08%	B-	2.58/B-
College of Notre Dame	73.95%	50.00%	C+	No data	I	63.99%	B+	49.79%	C+	2.63/B-
College of St. Francis	53.16%	36.46%	B-	25.18%	C	30.00%	C+	27.80%	C	2.25/C+
College of St. Rose	73.34%	23.25%	F	46.55%	C	34.08%	D+	32.06%	D	1.08/D+
Colorado Christian University	56.40%	51.18%	B+	55.53%	A-	50.00%	B+	55.49%	A-	3.50/A-
Colorado School of Mines	24.15%	22.81%	A-	25.31%	A	29.87%	A	28.55%	A	3.93/A
Columbus State University	62.49%	42.59%	B-	44.70%	B-	42.86%	B-	36.14%	C	2.53/B-
Concordia College	55.65%	41.79%	B	38.64%	B-	51.03%	A-	35.50%	C+	2.93/B
Davis and Elkins College	58.13%	50.00%	B+	43.40%	B	42.01%	B-	45.21%	B	3.00/B
Dowling College	54.67%	31.79%	C+	41.10%	B	53.33%	A-	39.94%	B	3.00/B
Drury College	52.99%	41.03%	B	46.44%	B+	33.97%	B-	36.47%	B-	2.93/B
East Central University	58.49%	23.15%	D+	28.75%	C	23.74%	C-	23.74%	C-	1.68/C-
East Stroudsburg University	56.12%	47.06%	B+	35.71%	C+	36.91%	B-	33.97%	C+	2.65/B-
East Texas Baptist University	59.69%	26.14%	C-	31.43%	C	34.53%	C	35.64%	C+	2.00/C
Eastern New Mexico University	55.13%	20.00%	D+	30.65%	C+	30.61%	C+	37.26%	B-	2.15/C+
Eckerd College	51.73%	34.25%	B-	37.06%	B	26.49%	C	31.69%	C+	2.50/B-
Edinboro University of Pennsylvania	57.08%	33.65%	C+	28.18%	C	15.17%	D	31.10%	C	1.83/C
Elizabeth City State University	61.83%	39.13%	C+	19.03%	D	33.33%	C	24.81%	D+	1.65/C-
Elon College	56.28%	34.45%	C+	27.65%	C	27.27%	C	29.02%	C	2.08/C+
Emporia State University	58.66%	34.17%	C+	28.48%	C-	37.76%	C+	38.02%	C+	2.15/C+
Erskine College	59.57%	51.01%	B+	38.56%	C+	50.00%	B+	48.45%	B	2.98/B
Fairmont State College	51.29%	34.57%	B-	27.77%	C+	30.61%	C+	37.58%	B	2.58/B-
Fayetteville State University	61.90%	30.95%	C-	16.65%	D	22.92%	D+	19.24%	D	1.25/D+
Ferris State University	43.00%	41.11%	A-	35.62%	B+	11.52%	C-	34.91%	B+	3.00/B
Florida Southern College	56.08%	43.21%	B	45.55%	B	27.19%	C	36.99%	B-	2.68/B-
Fort Hays State University	52.98%	26.55%	C	29.26%	C+	25.31%	C	31.25%	C+	2.15/C+
Fort Lewis College	45.91%	33.33%	B	41.47%	A-	34.80%	B	37.90%	B+	3.25/B+
Francis Marion University	55.39%	45.10%	B	47.97%	B+	52.14%	A-	44.43%	B	3.25/B+
Franklin Pierce College	46.20%	45.52%	A-	51.81%	A	43.90%	A-	49.03%	A	3.85/A

NCAA Division II Colleges N=215	% Females Enrolled	% Female Athletes	Grade	% Scholarship	Grade	% Recruitment	Grade	% Budget	Grade	GPA/ Grade
Gannon University	53.16%	34.13%	B-	45.68%	B+	29.81%	C+	28.27%	C+	2.65/B-
Georgia College and State University	63.28%	36.36%	C	45.75%	B-	47.64%	B-	43.12%	C+	2.43/B-
Georgia Southwestern State University	63.05%	40.57%	C+	49.01%	B	54.98%	B+	48.05%	B-	2.83/B
Glenville State College	54.34%	26.67%	C	15.32%	D+	9.54%	D	23.44%	C-	1.50/C-
Grand Canyon University	62.28%	32.82%	C	41.88%	C+	30.58%	C-	32.41%	C	2.00/C
Grand Valley State University	59.37%	35.88%	C+	29.53%	C	36.01%	C+	36.10%	C+	2.23/C+
Harding University	53.32%	19.83%	C-	28.03%	C	35.67%	B-	25.64%	C	2.10/C+
Hawaii Pacific University	48.69%	47.79%	A-	46.50%	A-	34.13%	B	33.88%	B	3.35/A
Henderson State University	54.95%	23.64%	C-	32.22%	C+	No data	I	31.26%	C+	2.10/C+
High Point University	57.07%	33.95%	C+	43.82%	B	43.16%	B	40.76%	B-	2.75/B
Indiana University of Pennsylvania	55.14%	44.93%	B	31.16%	C+	23.32%	C-	38.22%	B-	2.43/B-
Indiana Univ.-Purdue Univ.-Fort Wayne	55.84%	36.08%	B-	44.18%	B	45.72%	B	41.68%	B	2.93/B
Indiana Univ.-Purdue Univ.-Indianapolis	58.38%	33.19%	C	41.88%	B-	13.82%	D	32.36%	C	1.93/C
Johnson C. Smith University	59.66%	38.89%	C+	24.23%	D+	20.55%	D+	21.61%	D+	1.55/C-
Keene State College	57.40%	51.56%	B+	48.05%	B+	32.08%	C	57.33%	A-	3.08/B+
Kennesaw State University	59.03%	41.30%	B-	45.28%	B	49.38%	B+	42.89%	B-	2.93/B
Kentucky State University	53.59%	34.29%	B-	28.49%	C	29.69%	C+	18.56%	C-	2.18/C+
Kutztown University	57.17%	40.36%	B-	42.79%	B	22.52%	C-	30.60%	C	2.35/B-
Lake Superior State University	46.78%	37.58%	B+	36.67%	B	13.46%	C-	25.85%	C+	2.58/B-
Lander University	65.07%	40.40%	C+	46.79%	B-	31.43%	C-	37.83%	C	2.18/C+
Lane College	50.08%	30.38%	B-	3.30%	D	5.54%	D	9.85%	D	1.43/C-
Lees-McRae College	43.37%	48.62%	A	49.90%	A	45.45%	A	51.87%	A	4.00/A
LeMoyne College	56.41%	49.06%	B+	41.54%	B	47.89%	B+	50.00%	B+	3.23/B+
LeMoyne-Owen College	69.59%	45.12%	C+	45.83%	C+	50.00%	B-	50.00%	B-	2.50/B-
Limestone College	46.29%	28.98%	B-	29.71%	B-	40.00%	B+	32.73%	B	2.93/B
Lincoln University	56.71%	42.52%	B	44.03%	B	35.02%	C+	44.07%	B	2.83/B
Livingstone College	44.06%	34.29%	B+	19.58%	C+	71.96%	A	11.85%	C-	2.83/B
Lock Haven University of Pennsylvania	54.39%	39.16%	B-	31.41%	C+	44.08%	B	37.68%	B-	2.68/B-
Long Island University-C.W. Post	55.45%	23.65%	C-	39.97%	B-	22.49%	C-	31.01%	C+	2.10/C+
Longwood College	66.56%	48.42%	B-	46.29%	C+	45.68%	C+	48.98%	B-	2.50/B-
Lyon College	53.72%	38.71%	B-	42.79%	B	44.34%	B+	42.74%	B	3.00/B
Mankato State University	51.80%	38.73%	B	39.34%	B	39.37%	B	34.78%	B-	2.93/B
Mansfield University	56.68%	35.27%	C+	22.72%	C-	31.02%	C	37.38%	B-	2.18/C+
Mars Hill College	52.32%	29.01%	C+	24.66%	C	16.64%	D+	33.15%	B-	2.08/C+
Mercyhurst College	54.53%	31.80%	C+	36.99%	B-	23.94%	C-	29.32%	C	2.18/C+
Mesa State College	55.98%	34.62%	C+	36.66%	B-	36.80%	B-	36.83%	B-	2.60/B-
Metro State College of Denver	54.05%	42.58%	B	51.66%	A-	50.80%	A-	50.87%	A-	3.53/A-
Michigan Technological University	25.76%	22.88%	A-	23.18%	A-	20.47%	B+	13.67%	B	3.43/A-
Midwestern State University	55.00%	27.05%	C	33.16%	C+	40.03%	B	31.15%	C+	2.40/B-
Millersville University	59.17%	43.21%	B-	31.29%	C	34.66%	C+	36.60%	C+	2.33/C+
Mississippi College	57.06%	25.12%	C-	22.75%	C-	19.41%	D+	22.43%	C-	1.60/C-
Missouri Western State College	58.72%	27.62%	C-	31.00%	C	30.75%	C	33.86%	C+	2.00/C
Molloy College	81.83%	49.62%	C-	76.66%	B+	No data	I	39.91%	D	2.00/C
Moorhead State University	59.98%	51.77%	B+	39.86%	C+	38.25%	C+	45.67%	B	2.73/B-
Morris Brown College	58.07%	29.00%	C	7.45%	F	35.29%	C+	35.29%	C+	1.65/C-
Mount Olive College	54.40%	42.70%	B	41.93%	B	46.51%	B+	43.76%	B	3.08/B+
New Hampshire College	42.06%	30.67%	B	46.46%	A	52.76%	A	29.63%	B	3.50/A-
New Mexico Highlands University	51.97%	No data	I	40.83%	B	46.39%	B+	37.50%	B	3.10/B+
New York Institute of Technology	31.16%	28.67%	A-	31.08%	A-	44.44%	A	38.23%	A	3.85/A

NCAA Division II Colleges N=215	% Females Enrolled	% Female Athletes	Grade	% Scholarship	Grade	% Recruitment	Grade	% Budget	Grade	GPA/ Grade
Newberry College	42.86%	32.13%	B	21.54%	C+	16.30%	C	23.54%	B-	2.50/B-
North Carolina Central University	62.87%	31.48%	C-	32.96%	C	24.30%	D+	32.87%	C	1.75/C
North Dakota State University	42.40%	30.77%	B	28.49%	B	17.94%	C+	39.03%	A-	3.00/B
Northeastern State University	59.01%	30.52%	C	36.17%	C+	33.20%	C	33.20%	C	2.08/C+
Northern Kentucky University	57.48%	34.76%	C+	50.52%	B+	32.88%	C+	34.47%	C+	2.55/B-
Northern State University, SD	57.99%	31.79%	C	42.67%	B-	34.72%	C+	31.83%	C	2.25/C+
Northwest Missouri State University	54.65%	35.56%	B-	34.48%	C+	18.16%	D+	35.92%	B-	2.25/C+
Northwood University	36.26%	27.78%	B+	35.01%	A-	No data	I	37.43%	A	3.67/A-
Oakland University	64.39%	43.75%	C+	49.64%	B	44.69%	B-	35.67%	C	2.50/B-
Oklahoma Panhandle State University	50.78%	23.17%	C	46.32%	A-	43.23%	B+	35.67%	B-	2.93/B
Ouachita Baptist University	52.43%	26.82%	C	29.45%	C+	25.44%	C	24.22%	C	2.08/C+
Pace University	62.28%	24.35%	D+	50.59%	B	35.75%	C	28.19%	C-	2.00/C
Pfeiffer University	50.37%	42.86%	B+	41.38%	B+	44.38%	B+	42.10%	B+	3.30/B+
Philadelphia Coll. of Textiles and Sciences	62.34%	55.23%	B+	48.67%	B	55.00%	B+	48.13%	B	3.15/B+
Pittsburg State University	49.24%	23.34%	C	29.00%	C+	44.43%	A-	32.67%	B-	2.68/B-
Portland State University	51.99%	30.46%	C+	29.69%	C+	30.62%	C+	21.56%	C-	2.15/C+
Presbyterian College	49.73%	22.43%	C	21.52%	C	18.61%	C-	24.90%	C+	2.00/C
Queens College	75.88%	58.20%	B-	55.04%	C+	53.15%	C+	53.55%	C+	2.40/B-
Quincy University	50.58%	26.88%	C+	48.28%	A-	19.16%	C-	29.20%	C+	2.50/B-
Regis University	56.38%	37.10%	B-	51.78%	A-	28.95%	C	47.51%	B+	2.93/B
Rockhurst College	53.63%	40.45%	B	51.12%	A-	50.00%	A-	44.15%	B+	3.43/A-
Rollins College	57.56%	45.39%	B	48.46%	B+	37.43%	C+	42.71%	B	2.90/B
Salem-Teikyo University	39.55%	38.13%	A-	32.90%	B+	31.40%	B+	41.22%	A	3.58/A-
San Francisco State University	57.51%	43.46%	B	No data	I	54.55%	A-	48.93%	B+	3.33/B
Schreiner College	54.43%	42.98%	B	44.28%	B	24.79%	C	41.68%	B	2.75/B
Seattle Pacific University	64.33%	54.21%	B	51.74%	B	23.10%	D	51.06%	B	2.50/B-
Shepherd College	56.69%	26.00%	C-	23.22%	C-	15.51%	D	24.23%	C-	1.53C-
Shippensburg University	53.50%	44.86%	B+	32.24%	C+	28.30%	C	45.18%	B+	2.73/B-
Slippery Rock University	54.57%	36.58%	B-	34.66%	B-	31.68%	C+	36.80%	B-	2.60/B-
Sonoma State University	60.39%	35.41%	C+	No data	I	18.97%	D	33.10%	C	1.77/C
South Dakota State University	47.76%	31.70%	B-	29.55%	B-	21.72%	C	30.58%	B-	2.53/B-
Southern Arkansas University	57.72%	24.69%	C-	26.46%	C-	26.91%	C-	25.40%	C-	1.70/C-
Southern Connecticut State University	56.91%	39.40%	B-	15.45%	D	31.68%	C	32.10%	C+	2.00/C
Southern Illinois University-Edwardsville	56.99%	43.35%	B	41.17%	B-	40.94%	B-	37.83%	B-	2.78/B
Southwest Baptist University	54.73%	31.90%	C+	32.42%	C+	37.45%	B-	31.31%	C+	2.40/B-
Southwestern Oklahoma State University	59.95%	29.23%	C-	44.09%	B-	No data	I	24.10%	C-	2.03/C
St. Andrews Presbyterian College	52.84%	31.44%	C+	46.15%	B+	39.76%	B	31.50%	C+	2.73/B-
St. Augustine's College	57.65%	38.39%	B-	47.77%	B+	No data	I	44.24%	B	3.00/B
St. Cloud State University	50.58%	38.50%	B	27.09%	C+	14.53%	D+	31.82%	B-	2.33/C+
St. Edward's University	54.41%	43.29%	B	49.51%	A-	61.83%	A	48.64%	B+	3.50/A-
St. Joseph's College	45.95%	37.58%	B+	29.83%	B-	23.12%	C+	34.68%	B	2.83/B
St. Martin's College	60.63%	61.90%	A	53.55%	B+	54.69%	B+	53.88%	B+	3.48/A-
St. Mary's University	57.89%	42.48%	B-	51.75%	B+	31.25%	C	47.34%	B	2.75/B
St. Paul's College	66.37%	41.98%	C+	33.01%	C-	No data	I	49.91%	B-	2.23/C+
Stonehill College	56.57%	37.26%	B-	50.00%	B+	43.09%	B	39.05%	B-	2.93/B
SUNY-Albany	47.40%	41.92%	B+	50.20%	A	35.55%	B	38.32%	B+	3.40/A-
Tarleton State University	51.98%	32.78%	B-	30.36%	C+	30.41%	C+	36.03%	B-	2.50/B-
Texas A & M University-Commerce	57.00%	36.16%	C+	39.42%	B-	29.41%	C	33.79%	C+	2.33/C+
Texas Lutheran University	61.76%	37.97%	C+	43.99%	B-	57.01%	A-	43.68%	B-	2.85/B

NCAA Division II Colleges N=215	% Females Enrolled	% Female Athletes	Grade	% Scholarship	Grade	% Recruitment	Grade	% Budget	Grade	GPA/ Grade
Texas Wesleyan University	63.18%	36.00%	C	48.28%	B	37.01%	C	28.51%	C-	2.18/C+
Texas Woman's University	94.28%	100.00%	A	100.00%	A	100.00%	A	100.00%	A	4.00/A
Truman State University	56.34%	31.03%	C	31.26%	C	50.00%	B+	39.81%	B-	2.50/B-
Tusculum College	42.95%	27.71%	B-	31.48%	B	24.93%	B-	38.60%	A-	3.03/B
University of Alabama-Huntsville	48.88%	34.36%	B	38.14%	B	8.29%	D	25.84%	C+	2.33/C+
University of Alaska-Anchorage	56.28%	36.62%	B-	36.52%	B-	40.36%	B-	19.84%	D+	2.35/B-
University of Arkansas-Monticello	55.54%	25.90%	C	16.63%	D+	33.31%	C+	34.30%	C+	1.98/C
University of Bridgeport	54.15%	48.82%	B+	50.04%	A-	16.77%	D+	57.55%	A	3.08/B+
University of California-Davis	52.15%	32.36%	B-	No data	I	55.57%	A	37.12%	B-	3.13/B+
University of Central Arkansas	61.01%	34.59%	C	36.89%	C+	30.60%	C-	35.51%	C	2.00/C
University of Central Oklahoma	58.00%	26.34%	C-	32.26%	C	30.21%	C	26.27%	C-	1.85/C
University of Charleston	65.63%	47.65%	B-	45.71%	B-	37.50%	C	45.06%	C+	2.43/B-
University of Denver	52.52%	41.98%	B	43.06%	B+	40.08%	B	36.23%	B-	3.00/B
University of Findlay	47.39%	29.08%	B-	28.27%	B-	27.31%	C+	23.73%	C+	2.50/B-
University of Indianapolis	59.82%	38.71%	C+	33.48%	C	32.26%	C	34.78%	C	2.08/C+
University of Mary Hardin-Baylor	67.02%	43.37%	C+	46.89%	C+	21.89%	D-	41.19%	C	1.83/C
University of Massachusetts-Lowell	38.32%	33.33%	A-	28.11%	B	19.87%	B-	26.55%	B	3.10/B+
University of Minnesota-Duluth	46.31%	32.53%	B	18.22%	C	8.40%	D+	18.31%	C	2.08/C+
University of Minnesota-Morris	55.15%	32.28%	C+	No data	I	17.67%	D+	29.59%	C	1.87/C
University of Missouri-Rolla	23.69%	22.68%	A-	26.43%	A	20.25%	A-	28.28%	A	3.85/A
University of Missouri-St. Louis	58.95%	35.90%	C+	46.83%	B	33.55%	C	23.60%	C-	2.25/C
University of Montevallo	67.06%	41.54%	C	53.81%	B	54.26%	B	50.29%	B-	2.68/B-
University of Nebraska-Kearney	53.41%	29.40%	C+	33.07%	C+	24.27%	C	28.67%	C+	2.23/C+
University of Nebraska-Omaha	51.79%	25.41%	C	26.78%	C	23.76%	C	38.52%	B	2.25/C+
University of New Haven	37.66%	23.55%	B	30.28%	B+	35.73%	A-	27.20%	B	3.25/B+
University of North Alabama	56.89%	25.00%	C-	30.94%	C	29.40%	C	22.25%	C-	1.85/C
University of North Carolina-Pembroke	59.88%	28.51%	C-	41.66%	B-	No data	I	41.48%	B-	2.37/B-
University of North Florida	57.91%	35.75%	C+	44.89%	B	67.96%	A	47.08%	B	3.08/B+
University of Northern Colorado	54.19%	36.18%	B-	31.41%	C+	25.65%	C	34.68%	B-	2.43/B-
University of Pittsburgh-Johnstown	53.51%	53.47%	A-	40.60%	B	43.28%	B	45.82%	B+	3.25/B+
University of Puerto Rico	54.00%	42.70%	B	40.45%	B-	No data	I	7.95%	F	1.90/C
University of South Carolina-Aiken	63.25%	35.50%	C	32.56%	C-	46.67%	B-	31.79%	C-	2.03/C
University of South Carolina-Spartanburg	62.20%	42.19%	C+	40.35%	C+	44.27%	B-	42.90%	B-	2.50/B-
University of Southern Colorado	53.68%	39.79%	B	44.16%	B+	62.08%	A	39.03%	B	3.33/B+
University of West Alabama	52.77%	19.46%	C-	24.89%	C	19.58%	C-	22.07%	C-	1.78/C
University of West Florida	58.19%	38.53%	B-	41.81%	B-	48.78%	B+	36.55%	C+	2.75/B
Valdosta State University	60.34%	31.58%	C	24.01%	D+	17.30%	D	13.09%	D-	1.25/D+
Virginia State University	56.31%	37.24%	B-	19.25%	D+	26.30%	C-	35.69%	C+	2.00/C
Virginia Union University	56.37%	34.46%	C+	15.36%	D	17.61%	D+	23.64%	C-	1.58/C-
Washburn University	58.44%	31.07%	C	25.03%	C-	29.73%	C	33.79%	C+	2.00/C
Wayne State University	59.74%	21.63%	D+	37.75%	C+	20.08%	D+	35.25%	C+	1.80/C
West Chester University	59.29%	41.27%	B-	37.51%	C+	40.71%	B-	33.35%	C	2.43/B-
West Liberty State College	54.99%	25.79%	C	27.45%	C	10.90%	D	28.00%	C	1.75/C
West Texas A & M University	54.14%	21.98%	C-	32.42%	C+	32.93%	C+	26.41%	C	2.08/C+
West Virginia State College	53.56%	28.41%	C	23.68%	C	39.56%	B	36.51%	B-	2.43/B-
West Virginia Univ. Institute of Technology	24.63%	25.63%	A	25.57%	A	31.00%	A	28.00%	A	4.00/A
West Virginia Wesleyan College	54.30%	38.02%	B-	36.46%	B-	26.80%	C	34.45%	B-	2.53/B-
Western New Mexico University	60.09%	29.60%	C-	26.84%	C-	45.63%	B	45.70%	B	2.35/B-
Western Washington University	56.55%	44.47%	B	53.06%	A-	15.99%	D	36.15%	C+	2.50/B-

NCAA Division II Colleges N=215	% Females Enrolled	% Female Athletes	Grade	% Scholarship	Grade	% Recruitment	Grade	% Budget	Grade	GPA/ Grade
Westminster College	60.31%	27.45%	C-	29.10%	C-	31.25%	C	25.44%	C-	1.78/C
Wheeling Jesuit University	58.02%	24.44%	C-	45.35%	B	48.63%	B+	50.29%	B+	2.83/B
Wingate University	50.36%	29.21%	C+	30.95%	B-	24.13%	C	26.22%	C+	2.33/C+
Winona State University	60.00%	41.07%	B-	34.45%	C	38.31%	C+	44.48%	B-	2.43/B-
Winston-Salem State University	65.55%	28.87%	D+	15.07%	F	36.36%	C	33.28%	C-	1.25/D+

Average 2.5 Median 2.50 Lowest 1.08 Highest 4.00

The institutions in Division II which either responded too late to be included in this study or did not respond at all are as follows: Adams State College, Adelphi University, Alabama A&M University, Albany State College, American International College, Barry University, Bowie State University, Carson-Newman College, Catawba College, Chadron State College, Cheyney University, Clark University-Atlanta, Columbia Union College, Concord College, Concordia University-Texas, Delta State University, Florida Institute of Technology, Fort Valley State University, Gardner-Webb University, Hillsdale College, Humboldt State University, Kentucky Wesleyan College, Lambuth University, Lenoir-Rhyne College, Lewis University, Lynn University, Mercy College, Merrimack College, Miles College, Missouri Southern State College, Montana State University-Billings, Morehouse College, Morningside College, Norfolk State University, Northern Michigan University, Oakland City University, Paine College, Quinnipiac College, Sacred Heart University, Saginaw Valley State University, Saint Anselm College, Saint Leo College, Saint Michael's College, Savannah State University, Shaw University, Southampton College of LIU, Southeastern Oklahoma State University, Southwest State University, State University of West Georgia, Tuskegee University, University of Alaska-Fairbanks, University of California-Riverside, University of Colorado-Colorado Springs, University of Hawaii-Hilo, University of North Dakota, University of Puerto Rico-Mayaquez, University of Science & Arts of Oklahoma, University of Southern Indiana, University of Tampa, University of the Incarnate Word, University of the Virgin Islands, University of Wisconsin-Parkside, Western State College

Division III

NCAA Division III Colleges N=279	% Females Enrolled	% Female Athletes	Grade	% Recruitment	Grade	% Budget	Grade	GPA/ Grade
Chestnut Hill College (all female)	100.00%	100.00%		No data		100.00%		
College of St. Benedict (all female)	100.00%	100.00%		100.00%		100.00%		
Hollins College (all female)	100.00%	100.00%		No data		100.00%		
Lesley College (all female)	100.00%	100.00%		No data		100.00%		
Pine Manor College (all female)	100.00%	100.00%		No data		100.00%		
Randolph-Macon Woman's College (all female)	100.00%	100.00%		100.00%		100.00%		
Rosemont College (all female)	100.00%	100.00%		100.00%		100.00%		
Russell Sage College (all female)	100.00%	100.00%		100.00%		100.00%		
St. Joseph's College (all female)	100.00%	100.00%		100.00%		100.00%		
Trinity College DC (all female)	100.00%	100.00%		No data		100.00%		
Wilson College (all female)	100.00%	100.00%		100.00%		100.00%		
Adrian College	48.71%	35.13%	B	50.00%	A	No data	I	3.50/A-
Albertus Magnus College	58.04%	43.21%	B	46.15%	B	38.09%	B	3.00/B
Albright College	51.39%	31.81%	B-	15.95%	D+	18.70%	C	2.00/C
Alma College	56.11%	24.47%	C-	20.33%	D+	28.35%	C+	1.77/C
Alvernia College	61.99%	43.14%	B-	48.40%	B	47.63%	B+	3.00/B
Amherst College	44.24%	38.76%	B+	42.21%	A-	35.15%	A-	3.57/A-
Anderson University	57.46%	31.92%	C	No data	I	31.10%	C+	2.15/C+
Anna Maria College	71.99%	51.96%	C+	52.38%	B-	58.19%	B+	2.77/B
Augsburg College	51.69%	23.45%	C	5.15%	D-	25.28%	C+	1.67/C-

NCAA Division III Colleges N=279	% Females Enrolled	% Female Athletes	Grade	% Recruitment	Grade	% Budget	Grade	GPA/ Grade
Austin College	53.58%	24.26%	C	26.13%	C	17.50%	C-	1.90/C
Averett College	61.52%	45.12%	B-	53.13%	B+	50.79%	B+	3.10/B+
Babson College	36.64%	44.10%	A	42.68%	A	37.31%	A	4.00/A
Baldwin Wallace College	58.83%	32.24%	C	51.90%	B+	No data	I	2.65/B-
Bard College	59.42%	53.79%	B+	50.00%	B+	55.05%	A-	3.43/A-
Baruch	57.04%	49.57%	B+	No data	I	47.55%	A-	3.50/A-
Bates College	51.16%	46.78%	A-	50.00%	A-	32.34%	B	3.47/A-
Bethany College	48.05%	22.83%	C	28.21%	B-	25.87%	B-	2.47/B-
Bethel College	61.38%	34.57%	C	12.20%	D-	23.33%	C-	1.47/C-
Blackburn College	46.37%	28.03%	B-	No data	I	27.83%	B	2.85/B
Bluffton College	58.16%	39.69%	B-	20.00%	D+	28.95%	C+	2.10/C+
Bowdoin College	51.18%	42.08%	B+	No data	I	40.99%	B+	3.30/B+
Brandeis University	54.59%	47.38%	B+	34.93%	B-	30.08%	B-	2.90/B
Bridgewater College	54.75%	38.22%	B-	19.10%	D+	30.02%	B-	2.23/C+
Bridgewater State College	58.17%	47.43%	B	50.28%	B+	44.02%	B+	3.20/B+
Brooklyn College	58.90%	60.55%	A	21.96%	D+	56.88%	A-	3.00/B
Buena Vista University	50.92%	26.02%	C+	10.86%	D	32.93%	B	2.10/C+
Buffalo State College	53.03%	42.00%	B	40.06%	B	29.71%	B-	2.90/B
Cabrini College	70.15%	49.74%	C+	11.38%	F	47.13%	B-	1.67/C-
California Institute of Technology	26.44%	32.66%	A	50.00%	A	39.93%	A	4.00/A
California Lutheran University	54.24%	32.08%	C+	13.29%	D	28.86%	C+	1.87/C
Calvin College	56.01%	49.73%	B+	44.93%	B	51.68%	A-	3.33/B+
Capital University	62.19%	35.59%	C	26.65%	D+	35.23%	C+	1.87/C
Carleton College	50.10%	29.10%	C+	30.69%	B-	31.38%	B	2.67/B-
Carnegie-Mellon University	31.74%	31.28%	A-	33.59%	A	39.03%	A	3.90/A
Carroll College	65.82%	36.18%	C	35.21%	C-	30.80%	C-	1.80/C
Case Western Reserve University	40.34%	33.65%	B+	40.43%	A	39.14%	A-	3.67/A-
Catholic University of America	55.04%	40.52%	B	No data	I	37.58%	B	3.00/B
Central College	57.67%	32.85%	C+	47.14%	B+	35.60%	B-	2.77/B
Central Missouri State University	52.59%	35.24%	B-	29.60%	C	39.89%	B+	2.67/B-
Centre College	49.90%	37.57%	B	No data	I	41.34%	A-	3.35/A-
Chowan College	45.15%	27.19%	B-	17.40%	C	31.64%	B+	2.67/B-
Christopher Newport University	62.07%	40.19%	C+	No data	I	41.26%	B-	2.50/B-
City College of New York	48.85%	33.70%	B-	No data	I	27.91%	B-	2.70/B-
Claremont-Mudd-Scripps Colleges	55.65%	40.60%	B-	35.11%	C+	30.46%	C+	2.43/B-
Clark University	58.07%	55.67%	A-	No data	I	54.83%	A-	3.70/A-
Clarkson University	24.46%	33.22%	A	13.03%	B	20.48%	A-	3.57/A-
Colby College	54.58%	48.65%	B+	50.00%	A-	40.12%	B+	3.43/A-
Colby-Sawyer College	61.79%	46.01%	B-	49.80%	B	41.86%	B	2.90/B
College Misericordia	76.21%	56.86%	B-	49.61%	C	48.03%	C+	2.33/C+
College of Mount St. Joseph	68.43%	32.24%	D+	7.20%	F	31.16%	C-	1.00/D
College of Mount St. Vincent	80.05%	64.83%	B-	No data	I	No data	I	2.70/B-
College of New Jersey	59.96%	43.84%	B-	42.01%	B-	42.90%	B	2.80/B
College of St. Scholastica	71.57%	46.74%	C+	19.96%	F	35.31%	C-	1.33/D+
College of Staten Island	53.53%	42.73%	B	No data	I	44.83%	A-	3.35/B+
College of Wooster	52.10%	44.42%	B+	23.73%	C	36.76%	B	2.77/B
Concordia College	61.39%	33.57%	C	27.00%	C-	31.46%	C+	2.00/C
Concordia University-Illinois	58.55%	24.13%	C-	50.00%	B+	25.46%	C	2.33/C+
Cornell College	56.85%	30.74%	C	13.76%	D	36.37%	B-	1.90/C

NCAA Division III Colleges N=279	% Females Enrolled	% Female Athletes	Grade	% Recruitment	Grade	% Budget	Grade	GPA/ Grade
Curry College	51.26%	25.79%	C	13.64%	D+	26.13%	C+	1.87/C
Daniel Webster College	28.26%	42.11%	A	55.39%	A	45.10%	A	4.00/A
Defiance College	46.44%	34.42%	B	13.51%	C-	26.86%	B	2.57/B-
Denison University	52.61%	22.86%	C	27.01%	C	29.91%	B-	2.23/C+
Dickinson College	56.48%	40.63%	B-	20.22%	D+	30.05%	C+	2.10/C+
Drew University	59.65%	54.12%	B+	41.34%	B-	36.50%	B-	2.90/B
Earlham College	56.88%	40.88%	B-	No data	I	No data	I	2.70/B-
Eastern College	66.47%	58.56%	B+	60.00%	B+	54.73%	B+	3.30/B+
Eastern Connecticut State University	53.07%	43.46%	B+	51.25%	A-	43.43%	A-	3.57/A-
Eastern Mennonite University	61.93%	30.46%	C-	36.36%	C	36.05%	C+	2.00/C
Eastern Nazarene College	55.80%	38.40%	B-	13.63%	D	41.92%	B+	2.33/C+
Eastern Oregon State College	52.49%	14.24%	D+	20.00%	C-	22.67%	C+	1.77/C
Edgewood College	69.99%	51.88%	B-	No data	I	50.93%	B	2.85/B
Elizabethtown College	68.43%	50.55%	B-	53.54%	B	47.88%	B-	2.80/B
Elmhurst College	64.73%	33.62%	C-	No data	I	43.51%	B-	2.20/C+
Emerson College	56.22%	48.05%	B+	43.92%	B	44.65%	B+	3.20/B+
Emory University	56.37%	17.82%	D+	25.60%	C-	25.05%	C	1.67/C-
Eureka College	49.38%	30.12%	B-	No data	I	30.17%	B	2.85/B
Fairleigh Dickinson University-Madison	48.94%	31.79%	B-	36.76%	B	33.95%	B+	3.00/B
Ferrum College	42.17%	27.15%	B-	30.87%	B	35.26%	A-	3.13/B+
Fitchburg State College	58.82%	40.07%	B-	29.04%	C	34.54%	B-	2.47/B-
Fontbonne College	73.98%	50.98%	C+	No data	I	44.53%	C+	2.30/C+
Framingham State College	62.36%	29.70%	C-	32.53%	C	33.48%	C+	2.00/C
Franklin and Marshall College	46.22%	32.23%	B	32.08%	B	35.47%	B+	3.10/B+
Franklin College of Indiana	54.62%	29.73%	C+	No data	I	28.39%	C+	2.30/C+
Frostburg State University	49.01%	37.10%	B	39.55%	B+	40.67%	A-	3.33/B+
Gallaudet University	53.36%	27.64%	C	No data	I	40.58%	B+	2.65/B-
George Fox University	60.93%	49.84%	B	31.75%	C	46.09%	B+	2.77/B
Gettysburg College	51.75%	39.21%	B	33.56%	B-	37.09%	B+	3.00/B
Goucher College	70.10%	50.25%	B-	50.65%	B-	57.46%	B+	2.90/B
Greensboro College	56.77%	39.59%	B-	38.13%	B-	40.51%	B	2.80/B
Greenville College	50.00%	36.40%	B	26.69%	C+	23.22%	C+	2.53/B-
Grove City College	49.49%	36.67%	B	No data	I	No data	I	3.00/B
Gustavus Adolphus College	53.88%	35.62%	B-	No data	I	31.68%	B-	2.70/B-
Gwynedd Mercy College	83.55%	59.09%	C+	62.50%	C+	52.92%	C	2.20/C+
Hamilton College	46.20%	42.15%	A-	50.00%	A	35.91%	B+	3.67/A-
Hamline University	58.48%	42.86%	B-	No data	I	33.36%	C+	2.50/B-
Hanover College	52.09%	31.71%	C+	13.87%	D+	29.28%	B-	2.10/C+
Hardin-Simmons University	50.03%	18.62%	C-	20.24%	C	30.19%	B	2.23/C+
Hartwick College	52.30%	40.38%	B	14.08%	D+	36.33%	B	2.43/B-
Haverford College	50.00%	43.40%	B+	No data	I	42.97%	A-	3.50/A-
Heidelberg College	46.02%	28.40%	B-	No data	I	25.68%	B-	2.70/B-
Hiram College	52.75%	33.33%	B-	50.00%	A-	32.74%	B-	3.03/B
Hobart and William Smith Colleges	51.41%	46.15%	B+	31.61%	B-	42.74%	A-	3.23/B+
Hope College	56.88%	36.38%	C+	44.08%	B	39.20%	B	2.77/B
Hunter College	73.57%	92.00%	A	54.55%	B-	54.24%	B	3.23/B+
Illinois College	54.25%	33.03%	C+	43.44%	B	31.33%	B-	2.67/B-
Ithaca College	52.87%	47.23%	B+	22.01%	C-	44.40%	A-	2.90/B
Jersey City State College	57.15%	25.32%	C-	22.96%	C-	20.94%	C-	1.70/C-

NCAA Division III Colleges N=279	% Females Enrolled	% Female Athletes	Grade	% Recruitment	Grade	% Budget	Grade	GPA/ Grade
John Carroll University	50.06%	36.61%	B	38.24%	B	27.74%	B-	2.90/B
John Jay College of Criminal Justice	53.02%	35.76%	B-	45.61%	B+	38.82%	B+	3.10/B+
Johns Hopkins University	37.94%	33.11%	A-	16.01%	C+	33.25%	A-	3.23/B+
Johnson & Wales University	44.74%	40.65%	A-	No data	I	35.31%	A-	3.70/A-
Juniata College	55.66%	37.50%	B-	35.59%	C+	31.07%	B-	2.57/B-
Kalamazoo College	58.28%	39.87%	B-	16.67%	D	33.25%	C+	2.00/C
Kean College of New Jersey	61.91%	37.59%	C+	49.43%	B	40.11%	B-	2.67/B-
Kenyon College	52.25%	44.20%	B+	39.61%	B	41.17%	B+	3.20/B+
Keuka College	74.20%	60.66%	B	52.98%	C+	56.47%	B	2.77/B
King's College	46.67%	33.53%	B	32.84%	B	31.75%	B+	3.10/B+
La Roche College	59.57%	40.66%	B-	44.25%	B-	42.59%	B	2.80/B
Lake Forest College	55.18%	30.49%	C+	30.65%	C+	27.73%	C+	2.30/C+
Lakeland College	56.98%	33.33%	C+	40.00%	B-	31.34%	C+	2.43/B-
Lawrence University	51.54%	21.29%	C-	No data	I	30.43%	B-	2.20/C+
Lebanon Valley College	53.40%	18.70%	C-	14.39%	D+	22.98%	C	1.67/C-
Lehman College	70.60%	29.78%	D	No data	I	28.18%	D+	1.15/D+
Lewis and Clark College	56.67%	39.39%	B-	39.89%	B-	39.29%	B	2.80/B
Lincoln University-Pennsylvania	57.09%	40.74%	B-	No data	I	24.09%	C	2.35/B-
Linfield College	54.73%	17.14%	D+	12.74%	D	14.22%	D+	1.20/D+
Luther College	60.77%	43.09%	B-	33.47%	C	38.60%	B-	2.47/B-
Lycoming College	55.51%	35.51%	B-	41.48%	B	39.90%	B	2.90/B
Lynchburg College	64.20%	53.68%	B	32.76%	C-	42.59%	B-	2.47/B-
Maine Maritime Academy	11.63%	19.10%	A	No data	I	14.21%	A	4.00/A
Manhattanville College	68.70%	60.54%	B+	26.39%	D	60.24%	A-	2.67/B-
Marantha Baptist Bible College	51.49%	29.27%	C+	56.25%	A	33.60%	B	3.10/B+
Marietta College	45.76%	29.52%	B-	No data	I	No data	I	2.70/B-
Martin Luther College	47.00%	34.78%	B	No data	I	39.96%	A-	3.35/A-
Marymount University	73.49%	46.97%	C	50.00%	C+	47.28%	C+	2.20/C+
Maryville College	51.31%	23.48%	C	32.72%	B-	33.02%	B	2.57/B-
Maryville University of Saint Louis	69.76%	50.36%	B-	50.00%	B-	42.17%	C+	2.57/B-
Marywood College	76.18%	55.36%	C+	50.00%	C	56.40%	B	2.43/B-
Mass. Coll. of Pharmacy and Allied Health Sciences	62.11%	46.51%	B-	No data	I	44.48%	B	2.85/B
Massachusetts Institute of Technology	37.93%	28.77%	B+	No data	I	32.56%	A-	3.50/A-
Massachusetts Maritime Academy	12.97%	23.64%	A	50.00%	A	18.20%	A	4.00/A
McMurry University	48.24%	23.72%	C+	32.39%	B-	31.87%	B	2.67/B-
Medgar Evers College	79.14%	60.29%	B-	No data	I	55.90%	B-	2.70/B-
Messiah College	60.39%	48.23%	B	47.18%	B	50.28%	B+	3.10/B+
Methodist College	43.81%	24.55%	B-	36.19%	B+	32.52%	B+	3.10/B+
Middlebury College	49.73%	44.54%	B+	50.00%	A	41.26%	A-	3.67/A-
Millikin University	57.80%	35.28%	C+	10.45%	D-	29.25%	C+	1.77/C
Milwaukee School of Engineering	16.31%	28.86%	A	35.40%	A	23.57%	A	4.00/A
Monmouth College	57.75%	32.25%	C	34.41%	C+	37.48%	B-	2.33/C+
Montclair State University	61.80%	37.66%	C+	43.32%	B-	34.49%	C+	2.43/B-
Moravian College	51.92%	24.63%	C	23.49%	C	29.14%	B-	2.23/C+
Mount Saint Mary's College	71.33%	48.99%	C+	No data	I	50.00%	B-	2.50/B-
Nebraska Wesleyan University	58.39%	42.31%	B-	No data	I	41.05%	B	2.85/B
New Jersey Institute of Technology	19.25%	38.13%	A	No data	I	27.79%	A	4.00/A
New York University	57.63%	47.26%	B	46.24%	B	45.14%	B+	3.10/B+
Nichols College	37.24%	29.89%	B+	42.29%	A	31.75%	A-	3.67/A-

NCAA Division III Colleges N=279	% Females Enrolled	% Female Athletes	Grade	% Recruitment	Grade	% Budget	Grade	GPA/ Grade
North Adams State College	53.94%	39.86%	B	42.86%	B	33.68%	B-	2.90/B
North Carolina Wesleyan College	55.35%	41.94%	B	39.53%	B-	40.39%	B+	3.00/B
North Central College	53.69%	36.47%	B-	No data	I	31.31%	B-	2.70/B-
North Park College	62.03%	35.56%	C	17.26%	D	37.97%	B-	1.90/C
Occidental College	56.77%	38.05%	B-	No data	I	33.74%	B-	2.70/B-
Ohio Wesleyan University	50.76%	33.41%	B-	25.31%	C	31.02%	B	2.57/B-
Olivet College (MI)	39.00%	25.21%	B	37.22%	A-	34.37%	A-	3.47/A-
Pacific Lutheran University	60.70%	23.18%	D+	28.92%	C-	24.53%	C-	1.57/C-
Pacific University	57.82%	45.93%	B	48.43%	B+	47.40%	B+	3.20/B+
Pennsylvania State Univ.-Erie, The Behrend College	37.13%	45.77%	A	45.44%	A	51.59%	A	4.00/A
Plymouth State College	48.51%	39.38%	B+	43.51%	A-	36.37%	B+	3.43/A-
Pomona & Pitzer Colleges	51.29%	42.17%	B+	46.44%	A-	40.89%	B+	3.43/A-
Ramapo College of New Jersey	51.92%	42.11%	B+	37.94%	B	39.61%	B+	3.20/B+
Randolph-Macon College	50.14%	33.94%	B-	41.15%	B+	33.56%	B	3.00/B
Rensselaer Polytechnic Institute	23.42%	39.86%	A	14.32%	B+	19.37%	A-	3.67/A-
Rhode Island College	66.38%	48.46%	B-	56.72%	B+	71.34%	A	3.33/B+
Richard Stockton College of New Jersey	53.85%	38.73%	B-	25.69%	C	41.20%	B+	2.67/B-
Ripon College	54.10%	27.72%	C	No data	I	29.08%	C+	2.15/C+
Rivier College	82.98%	53.15%	C	50.00%	C-	53.42%	C+	2.00/C
Roanoke College	60.73%	39.73%	C+	20.46%	D	37.81%	B-	2.00/C
Roger Williams University	43.88%	27.33%	B-	40.00%	A-	23.43%	B-	3.03/B
Rose-Hulman Institute of Technology	6.81%	2.26%	A-	21.49%	A	8.53%	A	3.90/A
Rowan College of New Jersey	56.78%	40.19%	B-	44.81%	B	41.32%	B	2.90/B
Rust College	64.19%	41.75%	C+	38.66%	C	37.84%	C+	2.20/C+
Rutgers, SUNJ-Camden	55.58%	32.64%	C+	No data	I	33.31%	B-	2.50/B-
Rutgers, SUNJ-Newark	54.87%	38.93%	B-	21.13%	C-	25.40%	C+	2.23/C+
Salem State College	58.27%	52.19%	B+	67.38%	A	33.05%	C+	3.20/B+
Salisbury State University	56.72%	42.76%	B	38.84%	B-	41.31%	B	2.90/B
Salve Regina University	66.77%	44.17%	C+	No data	I	27.83%	C-	2.00/C
Shenandoah University	60.12%	35.75%	C+	No data	I	33.78%	C+	2.30/C+
Skidmore College	60.45%	29.14%	C-	35.99%	C+	31.21%	C+	2.10/C+
Southwestern University	56.15%	41.54%	B	39.20%	B-	51.22%	A-	3.13/B+
St. Lawrence University	49.92%	38.46%	B	7.53%	D	31.68%	B	2.33/C+
St. Mary's College of Maryland	56.39%	46.99%	B+	No data	I	50.20%	A-	3.50/A-
St. Mary's University of Minnesota	51.65%	44.58%	B+	47.62%	A-	43.72%	A-	3.57/A-
St. Norbert College	56.02%	30.66%	C	11.07%	D	27.30%	C+	1.77/C
Stevens Institute of Technology	19.78%	32.11%	A	12.55%	B+	27.36%	A	3.77/A
Suffolk University	54.53%	37.89%	B-	41.67%	B	28.02%	C+	2.67/B-
Sul Ross State University	44.85%	28.11%	B-	18.54%	C	35.27%	A-	2.80/B
SUNY-Binghamton	53.85%	43.40%	B	46.15%	B+	44.23%	A-	3.33/B+
SUNY-Brockport	54.94%	41.67%	B	36.65%	B-	43.67%	B+	3.00/B
SUNY-Cortland	55.74%	44.12%	B	29.87%	C	48.76%	A-	2.90/B
SUNY-Fredonia	55.66%	43.36%	B	40.79%	B	38.55%	B	3.00/B
SUNY-Geneseo	63.82%	51.36%	B	61.11%	A-	49.45%	B+	3.33/B+
SUNY-New Paltz	62.22%	40.95%	C+	48.15%	B	47.15%	B	2.77/B
SUNY-Oneonta	59.61%	52.56%	B+	46.48%	B	52.07%	A-	3.33/B+
SUNY-Oswego	52.47%	40.50%	B	44.63%	B+	31.82%	B-	3.00/B
SUNY-Plattsburgh	56.20%	44.55%	B	29.41%	C	36.67%	B	2.67/B-
SUNY-Potsdam	56.77%	42.56%	B	50.00%	B+	43.54%	B+	3.20/B+

NCAA Division III Colleges N=279	% Females Enrolled	% Female Athletes	Grade	% Recruitment	Grade	% Budget	Grade	GPA/ Grade
SUNY-Utica/Rome	41.90%	42.28%	A	50.00%	A	42.63%	A	4.00/A
Susquehanna University	51.95%	42.59%	B+	30.23%	C+	32.96%	B	2.87/B
Swarthmore College	51.99%	45.19%	B+	37.49%	B	43.81%	A-	3.33/B+
Thomas More College	51.73%	19.77%	C-	20.71%	C-	21.09%	C	1.80/C
Trinity College (Conn.)	48.96%	37.98%	B	No data	I	40.16%	A-	3.35/A-
Tufts University	52.13%	39.93%	B	No data	I	41.95%	B+	3.15/B+
Union College	46.78%	35.71%	B	20.75%	C	29.01%	B	2.67/B-
United States Merchant Marine Academy	9.38%	14.93%	A	1.19%	B+	6.02%	A-	3.67/A-
University of California-San Diego	49.45%	45.69%	A-	55.03%	A	48.01%	A-	3.80/A
University of California-Santa Cruz	60.14%	45.78%	B	No data	I	50.00%	B+	3.15/B+
University of Chicago	45.54%	37.38%	B+	23.68%	C+	38.97%	A-	3.10/B+
University of Dallas	54.07%	45.10%	B+	50.00%	A-	47.67%	A-	3.57/A-
University of Dubuque	48.90%	26.09%	C+	21.41%	C	22.55%	C+	2.20/C+
University of Maine	68.18%	51.70%	B-	32.05%	D+	43.91%	B-	2.23/C+
University of Massachusetts-Boston	52.62%	24.60%	C	5.44%	D-	23.81%	C+	1.67/C-
University of Massachusetts-Dartmouth	51.59%	36.24%	B-	15.34%	D+	27.86%	B-	2.23/C+
University of Pennsylvania-Bradford	59.31%	40.34%	B-	51.37%	B+	45.66%	B+	3.10/B+
University of Puget Sound	58.95%	41.70%	B-	2.76%	F	45.78%	B+	2.00/C
University of Redlands	53.15%	35.38%	B-	17.67%	D+	32.04%	B-	2.23/C+
University of Rochester	48.49%	39.56%	B+	35.49%	B	39.88%	A-	3.33/B+
University of Southern Maine	56.29%	No data	I	50.00%	B+	42.22%	B+	3.30/B+
University of St. Thomas	52.00%	33.50%	B-	22.82%	C	29.30%	B-	2.47/B-
University of the South	48.37%	39.88%	B+	9.36%	D+	35.00%	B+	2.63/B-
University of Wisconsin-Eau Claire	59.61%	41.65%	B-	37.50%	C+	41.02%	B	2.67/B-
University of Wisconsin-La Crosse	56.55%	46.28%	B	29.16%	C	39.36%	B	2.67/B-
University of Wisconsin-Oshkosh	57.56%	42.54%	B-	28.96%	C	48.80%	A-	2.80/B
University of Wisconsin-Platteville	34.43%	27.95%	B+	27.29%	B+	38.20%	A	3.53/A-
University of Wisconsin-Stout	48.43%	34.95%	B	31.53%	B-	40.38%	A-	3.13/B+
University of Wisconsin-Superior	54.44%	33.95%	C+	40.16%	B	40.72%	B+	2.87/B
University of Wisconsin-Whitewater	53.35%	42.80%	B	15.48%	D+	47.04%	A-	2.67/B-
Upper Iowa University	42.67%	13.55%	C	23.44%	B-	23.65%	B	2.57/B-
Ursinus College	52.37%	44.35%	B+	50.00%	A-	43.50%	A-	3.57/A-
Utica College	62.46%	50.28%	B	46.59%	B-	49.36%	B+	3.00/B
Vassar College	62.31%	47.49%	B	46.01%	B-	49.59%	B+	3.00/B
Virginia Wesleyan College	61.71%	36.89%	C+	41.82%	B-	41.59%	B-	2.57/B-
Wartburg College	57.08%	37.21%	B-	No data	I	33.46%	B-	2.70/B-
Washington and Jefferson College	43.53%	31.07%	B	17.55%	C	31.84%	B+	2.77/B
Washington and Lee University	40.98%	30.42%	B	12.16%	C	32.04%	A-	2.90/B
Washington College	55.38%	52.65%	A-	42.37%	B	40.77%	B+	3.33/B+
Washington University	47.73%	33.86%	B	38.78%	B+	40.49%	A-	3.33/B+
Waynesburg College	53.91%	33.69%	C+	14.66%	D+	28.06%	C+	1.97/C
Webster University	59.61%	49.26%	B	No data	I	49.15%	B+	3.15/B+
Wentworth Institute of Technology	12.17%	29.63%	A	15.00%	A	21.71%	A	4.00/A
Wesleyan University	51.85%	38.06%	B	40.57%	B	50.81%	A-	3.23/B+
Western Connecticut State University	50.89%	32.59%	B-	40.24%	B	39.07%	B+	3.00/B
Western Maryland College	54.97%	40.87%	B	50.00%	A-	39.23%	B	3.23/B+
Western Oregon State College	57.13%	17.02%	D	11.77%	D-	21.77%	C-	1.13/D+
Westfield State College	103.33%	39.58%	F	44.34%	B+	36.31%	B+	2.20/C+
Wheaton College IL	52.54%	39.39%	B	7.36%	D-	33.33%	B	2.23/C+

NCAA Division III Colleges N=279	% Females Enrolled	% Female Athletes	Grade	% Recruitment	Grade	% Budget	Grade	GPA/ Grade
Wheaton College (MA)	65.04%	60.16%	A-	28.70%	D+	59.29%	A-	2.90/B
Whittier College	55.19%	34.71%	C+	20.38%	C-	25.46%	C+	2.10/C+
Whitworth College	59.24%	18.83%	D	13.37%	D-	23.10%	C-	1.13/D+
Wilkes University	49.12%	31.02%	B-	18.68%	C-	24.32%	B-	2.37/B-
Willamette University	56.33%	37.04%	B-	6.00%	F	42.34%	B+	2.00/C
William Paterson College of New Jersey	57.69%	37.43%	C+	30.60%	C	39.77%	B	2.43/B-
William Penn College	44.07%	30.80%	B	40.17%	A-	34.09%	A-	3.47/A-
Williams College	49.08%	37.89%	B	24.42%	C+	41.68%	A-	3.00/B
Wisconsin Lutheran	58.79%	47.37%	B	49.69%	B+	52.13%	A-	3.33/B+
Wittenberg University	56.49%	41.41%	B-	31.38%	C	40.35%	B	2.57/B-
Worcester Polytechnic Institute	20.72%	30.97%	A	28.57%	A	34.26%	A	4.00/A
Worcester State College	58.26%	40.00%	B-	46.15%	B	29.75%	C+	2.67/B-
York College NY	67.39%	43.22%	C+	44.68%	B	46.78%	B-	2.67/B-
York College of Pennsylvania	56.89%	42.22%	B	No data	I	42.57%	B+	3.15/B+

Average 2.77 Median 2.80 Lowest 1.00 Highest 4.00

The institutions in Division III which either responded too late to be included in this study or did not respond at all are as follows: Albion College, Alfred University, Allegheny College, Allentown College, Aurora University, Beaver College, Beloit College, Benedictine University, Bennett College, Cardinal Stritch College, Carthage College, Cazenovia College, Chapman University, Chatham College, Clarke College, Coe College, Colorado College, Concordia University-Wisconsin, Connecticut College, De Pauw University, Delaware Valley College, Elmira College, Emmanuel College, Emory & Henry College, Endicott College, Evergreen State College, Fisk University, Gordon College, Grinnell College, Guilford College, Hendrix College, Hilbert College, Illinois Wesleyan University, Johnson State College, Knox College, Lake Erie College, Lasell College, Lawrence University, Lewis-Clark State College, Loras College, Macalester College, MacMurray College, Manchester College, Marian College, Mary Washington College, Menlo College, Mills College, Millsaps College, Mount Union College, Muhlenberg College, Muskingum College, Nazareth College, Neuman College, New England College, Norwich University, Oberlin College, Oglethorpe University, Ohio Northern University, Otterbein College, Polytechnic University, Rhodes College, Rochester Institute of Technology, Rockford College, Saint John Fisher College, Saint John's University, Saint Olaf College, Saint Peter's College, Savannah College of Art and Design, Simpson College, Southern Vermont College, Springfield College, Stephens College, Stillman College, SUNY-Maritime College, SUNY-Old Westbury, SUNY-Stony Brook, Sweet Briar College, Thiel College, U.S. Coast Guard Academy, University of La Verne, University of Scranton, University of the Ozarks, University of Wisconsin-River Falls, University of Wisconsin-Stevens Point, Villa Julie College, Wabash College, Wesley College, Western New England College, Wheelock College, Whitman College, Widener University, Wilmington College, Yeshiva University

Appendix B: List of Resources

Legal Resources

These organizations may be of assistance in handling Title IX situations. Some organizations can take on cases without charging fees: ask what their policy is. Also, contact the Women's Sports Foundation for its list of individual attorneys who are interested in Title IX cases.

American Civil Liberties Union
122 Maryland Ave., NE
Washington, DC 20002
(202) 544-1681

Northwest Women's Law Center
119 S. Main St., Suite 330
Seattle, WA 98104
(206) 621-7691

Trial Lawyers for Public Justice
Suite 100
1625 Massachusetts Ave., NW
(202) 797-8600

National Women's Law Center
1616 P Street, NW
Washington, DC 20036
(202) 588-5180

NOW Legal Defense and Education Fund
99 Hudson Street
New York, NY 10013
(212) 925-6635

Resources Organizations

The organizations may be able to offer help in other ways, such as writing letters of support, calling on your behalf, or offering names of others who can help.

American Volleyball Coaches Association
1227 Lake Plaza, Suite B
Colorado Springs, CO 80906
(719) 576-7777

National Organization for Women
1000 16th St., #700
Washington, DC 20036
(212) 331-0066

National Softball Coaches Association
31 E. Platte, Suite 314
Colorado Springs, CO 80903
(719) 444-8826

National Association for Girls and Women in Sport
1900 Association Drive
Reston, VA 22091
(703) 476-3453
(703)-476-9527 (F)

Center for Research on Girls and Women in Sport
203 Cooke Hall
University of Minnesota
Minneapolis, MN 55455
(612) 625-7327
626-7700 (F)
<http://www.coled.umn.edu/kls/crgws/>

Women's Basketball Coaches Association
4646 B Lawrenceville Hwy.
Lilburn, GA 30247-3620
(404) 279-8027

Women's Sports Foundation
Eisenhower Park
East Meadow, NY 11554
(516) 542-4700/(800) 227-3988
<http://www.lifetimetv.com/WoSport>

Helpful Publications

Cracking the Glass Slipper: Peer's Guide to Ending Sex Bias in Your Schools/Peer.
NOW Legal Defense and Education Fund, 1977.

Creating Gender Neutral Coaches' Employment and Compensation Systems.
Women's Sports Foundation, 1995.

Guide to Title IX and Intercollegiate Athletics.
Kramer, William D., Washinton, DC:
Squire, Sanders & Dempsey, 1991.

Playing Fair. Reith, Kathryn, Women's Sports Foundation, 1994.

Title IX. Women's Sports Foundation, 1996.

Title IX Toolbox. American Alliance for Health, Physical Education, Recreation and Dance, 1996.



For more information, please contact:

The Women's Sports Foundation®
Eisenhower Park
East Meadow, NY 11554
1-800-227-3988
email: wosport@aol.com
www.lifetime.com/WoSport